

For Research Use Only



LAIR1 Recombinant Matched Antibody Pair, PBS Only

Catalog Number:MP01466-1

Capture Antibody Information

Catalog Number:
84677-1-PBS
Host:
Rabbit
Isotype:
IgG
Purification Method:
Protein A purification

Clone ID:
241805A9
Reactivity:
human

Conjugate:
Unconjugated
Full name:
leukocyte-associated immunoglobulin-like receptor 1
Gene ID:
3903

Detection Antibody Information

Catalog Number:
84677-3-PBS
Host:
Rabbit
Isotype:
IgG
Purification Method:
Protein A purification

Clone ID:
241805F10
Reactivity:
human
GenBank:
BC027899

Conjugate:
Unconjugated
Full name:
leukocyte-associated immunoglobulin-like receptor 1
Gene ID:
3903

Applications

Tested Applications:
Cytometric bead array

Range:
0.469-30 ng/mL (Cytometric Bead Array)

Recommended Dilutions:
It is recommended that this reagent should be titrated in each testing system to obtain optimal results.

Product Information

MP01466-1 targets LAIR1 in immunoassays as a matched antibody pair. Validated in Cytometric bead array.

Capture antibody: LAIR1 Recombinant antibody, PBS Only (Capture) 84677-1-PBS (241805A9). 100 µg. Concentration 1 mg/mL.

Detection antibody: LAIR1 Recombinant antibody, PBS Only (Capture/Detector) 84677-3-PBS (241805F10). 100 µg. Concentration 1 mg/mL.

Alternative LAIR1 matched antibody pairs: MP01466-2

Unconjugated rabbit recombinant monoclonal antibody pair in PBS only storage buffer at a concentration of 1 mg/mL, ready for conjugation. Created using Proteintech's proprietary in-house recombinant technology. Recombinant production enables unrivalled batch-to-batch consistency, easy scale-up, and future security of supply.

Matched antibody pairs are designed for use in a variety of assays and platforms that require matched antibody pairs.

Antibody use should be optimized for each application and assay.

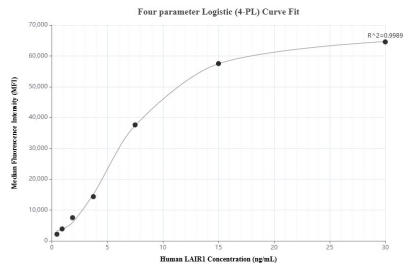
Storage

Storage:
Store at -80°C.
Storage buffer:
PBS only

For technical support and original validation data for this product please contact:
T: 1 (888) 4PTGLAB (1-888-478-4522) (toll free in USA), or 1(312) 455-8498 (outside USA) E: proteintech@ptglab.com
W: ptglab.com

This product is exclusively available under Proteintech Group brand and is not available to purchase from any other manufacturer.

Selected Validation Data



Cytometric bead array standard curve of MP01466-1, LAIR1 Recombinant Matched Antibody Pair, PBS Only. Capture antibody: 84677-1-PBS. Detection antibody: 84677-3-PBS. Standard: Eg2329. Range: 0.469-30 ng/mL