

For Research Use Only

# CD300a Recombinant Matched Antibody Pair, PBS Only



Catalog Number:MP01465-2

## Capture Antibody Information

**Catalog Number:**  
84674-1-PBS  
**Host:**  
Rabbit  
**Isotype:**  
IgG  
**Purification Method:**  
Protein A purification

**Clone ID:**  
242131F4  
**Reactivity:**  
human

**Conjugate:**  
Unconjugated  
**Full name:**  
CD300a molecule  
**Gene ID:**  
11314

## Detection Antibody Information

**Catalog Number:**  
84674-3-PBS  
**Host:**  
Rabbit  
**Isotype:**  
IgG  
**Purification Method:**  
Protein A purification

**Clone ID:**  
242131A5  
**Reactivity:**  
human  
**GenBank:**  
NM\_007261.4

**Conjugate:**  
Unconjugated  
**Full name:**  
CD300a molecule  
**Gene ID:**  
11314

## Applications

**Tested Applications:**  
Sandwich ELISA

**Range:**  
31.25-2000 pg/mL (Sandwich ELISA)

**Recommended Dilutions:**  
It is recommended that this reagent should be titrated in each testing system to obtain optimal results.

## Product Information

MP01465-2 targets CD300a in immunoassays as a matched antibody pair. Validated in Sandwich ELISA.

Capture antibody: CD300a Recombinant antibody, PBS Only (Capture/Detector) 84674-1-PBS (242131F4). 100 µg. Concentration 1 mg/mL.

Detection antibody: CD300a Recombinant antibody, PBS Only (Detector) 84674-3-PBS (242131A5). 100 µg. Concentration 1 mg/mL.

Unconjugated rabbit recombinant monoclonal antibody pair in PBS only storage buffer at a concentration of 1 mg/mL, ready for conjugation. Created using Proteintech's proprietary in-house recombinant technology. Recombinant production enables unrivalled batch-to-batch consistency, easy scale-up, and future security of supply.

Matched antibody pairs are designed for use in a variety of assays and platforms that require matched antibody pairs.

Antibody use should be optimized for each application and assay.

## Storage

**Storage:**  
Store at -80°C.  
**Storage buffer:**  
PBS only

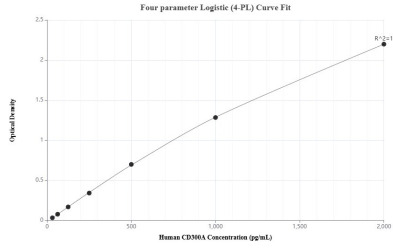
For technical support and original validation data for this product please contact:

T: 1 (888) 4PTGLAB (1-888-478-4522) (toll free in USA), or 1(312) 455-8498 (outside USA)

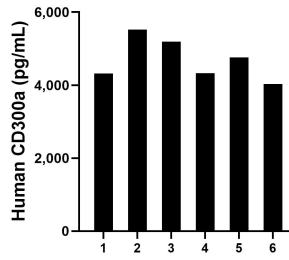
E: [proteintech@ptglab.com](mailto:proteintech@ptglab.com)  
W: [ptglab.com](http://ptglab.com)

**This product is exclusively available under Proteintech Group brand and is not available to purchase from any other manufacturer.**

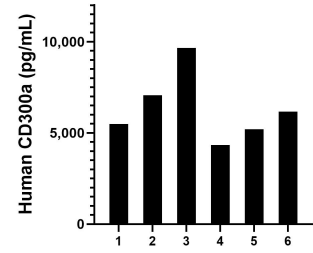
## Selected Validation Data



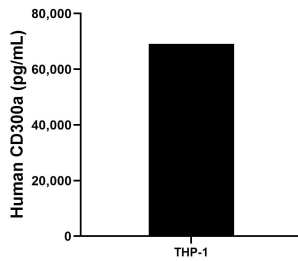
Sandwich ELISA standard curve of MP01465-2, Human CD300a Recombinant Matched Antibody Pair - PBS only. 84674-1-PBS was coated to a plate as the capture antibody and incubated with serial dilutions of standard Eg2652. 84674-3-PBS was HRP conjugated as the detection antibody. Range: 31.25-2000 pg/mL



Serum of six individual healthy human donors was measured. The human CD300a concentration of detected samples was determined to be 4,632.3 pg/mL with a range of 4,032.2 - 5,523.5 pg/mL.



Plasma of six individual healthy human donors was measured. The human CD300a concentration of detected samples was determined to be 6,315.1 pg/mL with a range of 4,330.2 - 9,560.6 pg/mL.



The mean CD300a concentration was determined to be 69,064.8 pg/mL in THP-1 cell extract based on a 4.4 mg/mL extract load.