

For Research Use Only

# CD46 Recombinant Matched Antibody Pair, PBS Only



Catalog Number:MP01445-3

## Capture Antibody Information

**Catalog Number:**  
84599-1-PBS  
**Host:**  
Rabbit  
**Isotype:**  
IgG  
**Purification Method:**  
Protein A purification

**Clone ID:**  
241764A11  
**Reactivity:**  
human

**Conjugate:**  
Unconjugated  
**Full name:**  
CD46 molecule, complement regulatory protein  
**Gene ID:**  
4179

## Detection Antibody Information

**Catalog Number:**  
84599-6-PBS  
**Host:**  
Rabbit  
**Isotype:**  
IgG  
**Purification Method:**  
Protein A purification

**Clone ID:**  
241764E1  
**Reactivity:**  
human  
**GenBank:**  
NM\_172351.3

**Conjugate:**  
Unconjugated  
**Full name:**  
CD46 molecule, complement regulatory protein  
**Gene ID:**  
4179

## Applications

**Tested Applications:**  
Sandwich ELISA

**Range:**  
39.1-2500 pg/mL (Sandwich ELISA)

**Recommended Dilutions:**  
It is recommended that this reagent should be titrated in each testing system to obtain optimal results.

## Product Information

MP01445-3 targets CD46 in immunoassays as a matched antibody pair. Validated in Sandwich ELISA.

Capture antibody: CD46 Recombinant antibody, PBS Only (Capture) 84599-1-PBS (241764A11). 100 µg. Concentration 1 mg/mL.

Detection antibody: CD46 Recombinant antibody, PBS Only (Detector) 84599-6-PBS (241764E1). 100 µg. Concentration 1 mg/mL.

Unconjugated rabbit recombinant monoclonal antibody pair in PBS only storage buffer at a concentration of 1 mg/mL, ready for conjugation. Created using Proteintech's proprietary in-house recombinant technology. Recombinant production enables unrivalled batch-to-batch consistency, easy scale-up, and future security of supply.

Matched antibody pairs are designed for use in a variety of assays and platforms that require matched antibody pairs.

Antibody use should be optimized for each application and assay.

## Storage

**Storage:**  
Store at -80°C.  
**Storage buffer:**  
PBS only

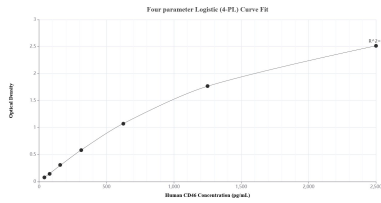
For technical support and original validation data for this product please contact:

T: 1 (888) 4PTGLAB (1-888-478-4522) (toll free in USA), or 1(312) 455-8498 (outside USA)

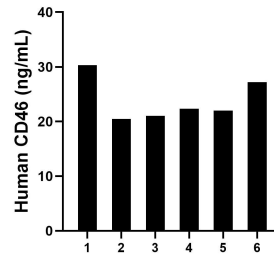
E: [proteintech@ptglab.com](mailto:proteintech@ptglab.com)  
W: [ptglab.com](http://ptglab.com)

**This product is exclusively available under Proteintech Group brand and is not available to purchase from any other manufacturer.**

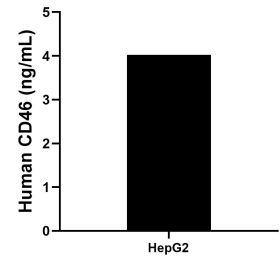
## Selected Validation Data



Sandwich ELISA standard curve of MP01445-3, Human CD46 Recombinant Matched Antibody Pair - PBS only. 84599-1-PBS was coated to a plate as the capture antibody and incubated with serial dilutions of standard Eg1770. 84599-6-PBS was HRP conjugated as the detection antibody. Range: 39.1-2500 pg/mL



Serum of six individual healthy human donors was measured. The CD46 concentration of detected samples was determined to be 23.9 ng/mL with a range of 20.5-30.3 ng/mL.



HepG2 cells were cultured in DMEM supplemented with 10% fetal bovine serum, 2.5 mM L-glutamine, 100 U/mL penicillin, and 100 µg/mL streptomycin sulfate. An aliquot of the cell culture supernatant was removed, assayed for human CD46, and measured 4.0 ng/mL.