

For Research Use Only

# Mouse TLR3 Recombinant Matched Antibody Pair, PBS Only



Catalog Number:MP01424-1

## Capture Antibody Information

Catalog Number:  
84618-1-PBS

Host:  
Rabbit

Isotype:  
IgG

Purification Method:  
Protein A purification

Clone ID:  
241792A5

Reactivity:  
mouse

Conjugate:  
Unconjugated

Full name:  
toll-like receptor 3

Gene ID:  
142980

## Detection Antibody Information

Catalog Number:  
84618-2-PBS

Host:  
Rabbit

Isotype:  
IgG

Purification Method:  
Protein A purification

Clone ID:  
241792B4

Reactivity:  
mouse

GenBank:  
NM\_126166.4

Conjugate:  
Unconjugated

Full name:  
toll-like receptor 3

Gene ID:  
142980

## Applications

Tested Applications:  
Cytometric bead array, Sandwich ELISA

Range:  
0.156-20 ng/mL (Cytometric Bead Array)  
78.1-5000 pg/mL (Sandwich ELISA)

Recommended Dilutions:  
It is recommended that this reagent should be titrated in each testing system to obtain optimal results.

## Product Information

MP01424-1 targets TLR3 in immunoassays as a matched antibody pair. Validated in Cytometric bead array, Sandwich ELISA.

Capture antibody: Mouse TLR3 Recombinant antibody, PBS Only (Capture) 84618-1-PBS (241792A5). 100 µg. Concentration 1 mg/ml.

Detection antibody: Mouse TLR3 Recombinant antibody, PBS Only (Detector) 84618-2-PBS (241792B4). 100 µg. Concentration 1 mg/ml.

Unconjugated rabbit recombinant monoclonal antibody pair in PBS only storage buffer at a concentration of 1 mg/mL, ready for conjugation. Created using Proteintech's proprietary in-house recombinant technology. Recombinant production enables unrivalled batch-to-batch consistency, easy scale-up, and future security of supply.

Matched antibody pairs are designed for use in a variety of assays and platforms that require matched antibody pairs.

Antibody use should be optimized for each application and assay.

## Storage

Storage:  
Store at -80°C.  
Storage buffer:  
PBS only

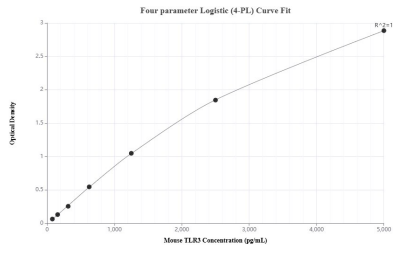
For technical support and original validation data for this product please contact:

T: 1 (888) 4PTGLAB (1-888-478-4522) (toll free in USA), or 1(312) 455-8498 (outside USA)

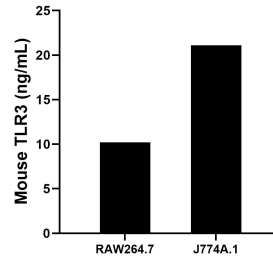
E: [proteintech@ptglab.com](mailto:proteintech@ptglab.com)  
W: [ptglab.com](http://ptglab.com)

This product is exclusively available under Proteintech Group brand and is not available to purchase from any other manufacturer.

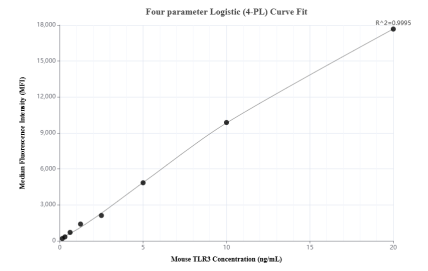
## Selected Validation Data



Sandwich ELISA standard curve of MP01424-1, Mouse TLR3 Recombinant Matched Antibody Pair - PBS only. 84618-1-PBS was coated to a plate as the capture antibody and incubated with serial dilutions of standard Eg1803. 84618-2-PBS was HRP conjugated as the detection antibody. Range: 78.1-5000 pg/mL



The mean TLR3 concentration was determined to be 10.21 ng/mL in RAW264.7 cell extract based on a 1.3 mg/mL extract load and 21.10 ng/mL in J774A.1 cell extract based on a 2.4 mg/mL extract load.



Cytometric bead array standard curve of MP01424-1, MOUSE TLR3 Recombinant Matched Antibody Pair, PBS Only. Capture antibody: 84618-1-PBS. Detection antibody: 84618-2-PBS. Standard: Eg1803. Range: 0.156-20 ng/mL