

For Research Use Only

MDH1 Recombinant Matched Antibody Pair, PBS Only



Catalog Number:MP01422-2

Capture Antibody Information

Catalog Number:
84576-1-PBS

Host:
Rabbit

Isotype:
IgG

Purification Method:
Protein A purification

Clone ID:
241887C5

Reactivity:
human

Immunogen Catalog Number:
Ag8744

Conjugate:
Unconjugated

Full name:
malate dehydrogenase 1, NAD
(soluble)

Gene ID:
4190

Detection Antibody Information

Catalog Number:
84576-2-PBS

Host:
Rabbit

Isotype:
IgG

Purification Method:
Protein A purification

Clone ID:
241887D8

Reactivity:
human

GenBank:
BC001484

Immunogen Catalog Number:
Ag8744

Conjugate:
Unconjugated

Full name:
malate dehydrogenase 1, NAD
(soluble)

Gene ID:
4190

Applications

Tested Applications:
Cytometric bead array, Sandwich
ELISA

Range:
0.781-100 ng/mL (Cytometric Bead
Array)
0.391-25 ng/mL (Sandwich ELISA)

Recommended Dilutions:
It is recommended that this reagent
should be titrated in each testing
system to obtain optimal results.

Product Information

MP01422-2 targets MDH1 in immunoassays as a matched antibody pair. Validated in Cytometric bead array, Sandwich ELISA.

Capture antibody: MDH1 Recombinant antibody, PBS Only (Capture/Detector) 84576-1-PBS (241887C5). 100 µg. Concentration 1 mg/ml.

Detection antibody: MDH1 Recombinant antibody, PBS Only (Detector) 84576-2-PBS (241887D8). 100 µg. Concentration 1 mg/ml.

Alternative MDH1 matched antibody pairs: MP01422-1

Unconjugated rabbit recombinant monoclonal antibody pair in PBS only storage buffer at a concentration of 1 mg/mL, ready for conjugation. Created using Proteintech's proprietary in-house recombinant technology. Recombinant production enables unrivalled batch-to-batch consistency, easy scale-up, and future security of supply.

Matched antibody pairs are designed for use in a variety of assays and platforms that require matched antibody pairs.

Antibody use should be optimized for each application and assay.

Storage

Storage:
Store at -80°C.
Storage buffer:
PBS only

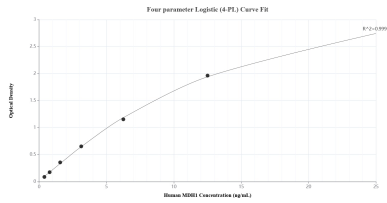
For technical support and original validation data for this product please contact:

T: 1 (888) 4PTGLAB (1-888-478-4522) (toll free in USA), or 1(312) 455-8498 (outside USA)

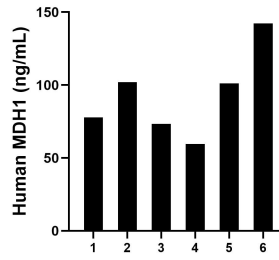
E: proteintech@ptglab.com
W: ptglab.com

This product is exclusively available under Proteintech Group brand and is not available to purchase from any other manufacturer.

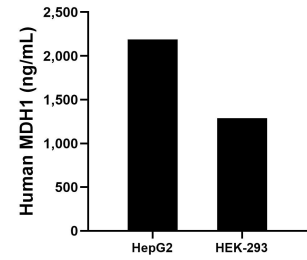
Selected Validation Data



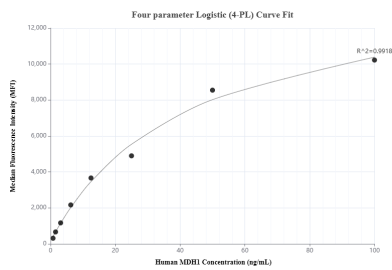
Sandwich ELISA standard curve of MP01422-2, Human MDH1 Recombinant Matched Antibody Pair - PBS only. 84576-1-PBS was coated to a plate as the capture antibody and incubated with serial dilutions of standard Ag8744. 84576-2-PBS was HRP conjugated as the detection antibody. Range: 0.391-25 ng/mL



Serum of six individual healthy human donors was measured. The MDH1 concentration of detected samples was determined to be 92.63 ng/mL with a range of 59.50-142.37 ng/mL



The mean MDH1 concentration was determined to be 2187.75 ng/mL in HepG2 cell extract based on a 2.30 mg/mL extract load and 1287.87 ng/mL in HEK-293 cell extract based on a 1.50 mg/mL extract load.



Cytometric bead array standard curve of MP01422-2, MDH1 Recombinant Matched Antibody Pair, PBS Only. Capture antibody: 84576-1-PBS. Detection antibody: 84576-2-PBS. Standard: Ag8744. Range: 0.781-100 ng/mL