

For Research Use Only

# LBR Recombinant Matched Antibody Pair, PBS Only



Catalog Number:MP01373-3

## Capture Antibody Information

Catalog Number:  
84522-1-PBS

Host:  
Rabbit

Isotype:  
IgG

Purification Method:  
Protein A purification

Clone ID:  
241864B4

Reactivity:  
human

Immunogen Catalog Number:  
Ag3088

Conjugate:  
Unconjugated

Full name:  
lamin B receptor

Gene ID:  
3930

## Detection Antibody Information

Catalog Number:  
84522-5-PBS

Host:  
Rabbit

Isotype:  
IgG

Purification Method:  
Protein A purification

Clone ID:  
241864E11

Reactivity:  
human

GenBank:  
BC020079

Immunogen Catalog Number:  
Ag3088

Conjugate:  
Unconjugated

Full name:  
lamin B receptor

Gene ID:  
3930

## Applications

Tested Applications:  
Sandwich ELISA

Range:  
0.195-12.5 ng/mL (Sandwich ELISA)

Recommended Dilutions:  
It is recommended that this reagent should be titrated in each testing system to obtain optimal results.

## Product Information

MP01373-3 targets LBR in immunoassays as a matched antibody pair. Validated in Sandwich ELISA.

Capture antibody: LBR Recombinant antibody, PBS Only (Capture) 84522-1-PBS (241864B4). 100 µg. Concentration 1 mg/ml.

Detection antibody: LBR Recombinant antibody, PBS Only (Detector) 84522-5-PBS (241864E11). 100 µg. Concentration 1 mg/ml.

Alternative LBR matched antibody pairs: MP01373-1, MP01373-2

Unconjugated rabbit recombinant monoclonal antibody pair in PBS only storage buffer at a concentration of 1 mg/mL, ready for conjugation. Created using Proteintech's proprietary in-house recombinant technology. Recombinant production enables unrivalled batch-to-batch consistency, easy scale-up, and future security of supply.

Matched antibody pairs are designed for use in a variety of assays and platforms that require matched antibody pairs.

Antibody use should be optimized for each application and assay.

## Storage

Storage:  
Store at -80°C.  
Storage buffer:  
PBS only

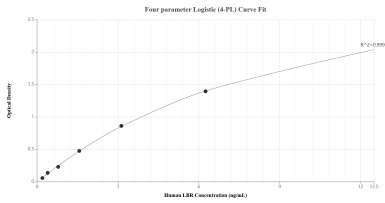
For technical support and original validation data for this product please contact:

T: 1 (888) 4PTGLAB (1-888-478-4522) (toll free in USA), or 1(312) 455-8498 (outside USA)

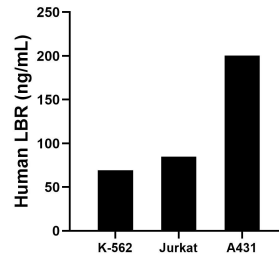
E: [proteintech@ptglab.com](mailto:proteintech@ptglab.com)  
W: [ptglab.com](http://ptglab.com)

This product is exclusively available under Proteintech Group brand and is not available to purchase from any other manufacturer.

## Selected Validation Data



Sandwich ELISA standard curve of MP01373-3, Human LBR Recombinant Matched Antibody Pair - PBS only. 84522-1-PBS was coated to a plate as the capture antibody and incubated with serial dilutions of standard Ag3088. 84522-5-PBS was HRP conjugated as the detection antibody. Range: 0.195-12.5 ng/mL



The mean LBR concentration was determined to be 69.49 ng/mL in K-562 cell extract based on a 2.40 mg/mL extract load, 84.74 ng/mL in Jurkat cell extract based on a 1.50 mg/mL extract load and 200.46 ng/mL in A431 cell extract based on a 1.50 mg/mL extract load.