

For Research Use Only

IL-2RG Recombinant Matched Antibody Pair, PBS Only



Catalog Number:MP01367-3

Capture Antibody Information

Catalog Number:
84501-6-PBS
Host:
Rabbit
Isotype:
IgG
Purification Method:
Protein A purification

Clone ID:
242020D9
Reactivity:
human

Conjugate:
Unconjugated
Full name:
interleukin 2 receptor, gamma
(severe combined immunodeficiency)
Gene ID:
3561

Detection Antibody Information

Catalog Number:
84501-5-PBS
Host:
Rabbit
Isotype:
IgG
Purification Method:
Protein A purification

Clone ID:
242020B12
Reactivity:
human
GenBank:
NM_000206.3

Conjugate:
Unconjugated
Full name:
interleukin 2 receptor, gamma
(severe combined immunodeficiency)
Gene ID:
3561

Applications

Tested Applications:
Sandwich ELISA

Range:
78.1-5000 pg/mL (Sandwich ELISA)

Recommended Dilutions:
It is recommended that this reagent should be titrated in each testing system to obtain optimal results.

Product Information

MP01367-3 targets IL-2RG in immunoassays as a matched antibody pair. Validated in Sandwich ELISA.

Capture antibody: IL-2 R gamma/CD132 Recombinant antibody, PBS Only (Capture) 84501-6-PBS (242020D9). 100 µg. Concentration 1 mg/ml.

Detection antibody: IL-2 R gamma/CD132 Recombinant antibody, PBS Only (Detector) 84501-5-PBS (242020B12). 100 µg. Concentration 1 mg/ml.

Unconjugated rabbit recombinant monoclonal antibody pair in PBS only storage buffer at a concentration of 1 mg/mL, ready for conjugation. Created using Proteintech's proprietary in-house recombinant technology. Recombinant production enables unrivalled batch-to-batch consistency, easy scale-up, and future security of supply.

Matched antibody pairs are designed for use in a variety of assays and platforms that require matched antibody pairs.

Antibody use should be optimized for each application and assay.

Storage

Storage:
Store at -80°C.
Storage buffer:
PBS only

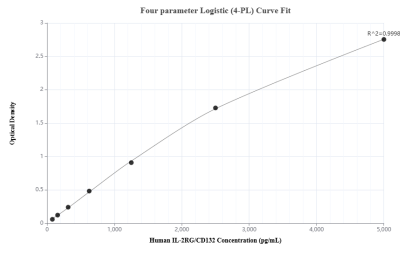
For technical support and original validation data for this product please contact:

T: 1 (888) 4PTGLAB (1-888-478-4522) (toll free in USA), or 1(312) 455-8498 (outside USA)

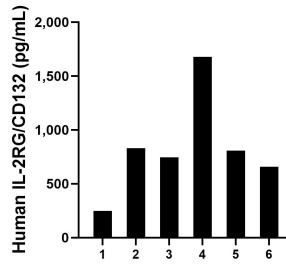
E: proteintech@ptglab.com
W: ptglab.com

This product is exclusively available under Proteintech Group brand and is not available to purchase from any other manufacturer.

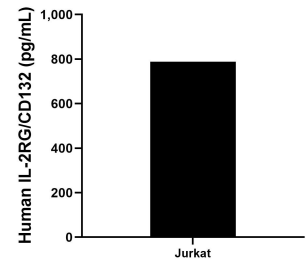
Selected Validation Data



Sandwich ELISA standard curve of MP01367-3, Human IL-2RG Recombinant Matched Antibody Pair - PBS only. 84501-6-PBS was coated to a plate as the capture antibody and incubated with serial dilutions of standard Eg1705. 84501-5-PBS was HRP conjugated as the detection antibody. Range: 78.1-5000 pg/mL.



Serum of six individual healthy human donors was measured. The human IL-2RG concentration of detected samples was determined to be 827.8 pg/mL with a range of 249.6 - 1,676.9 pg/mL.



The mean IL-2RG concentration was determined to be 788.4 pg/mL in Jurkat cell extract based on a 1.5 mg/mL extract load.