

For Research Use Only



# Mouse CD107b / LAMP2 Recombinant Matched Antibody Pair, PBS Only

Catalog Number:MP01356-4

## Capture Antibody Information

Catalog Number:

84474-2-PBS

Host:

Rabbit

Isotype:

IgG

Purification Method:

Protein A purification

Clone ID:

241893E12

Reactivity:

mouse

Conjugate:

Unconjugated

Full name:

lysosomal-associated membrane protein 2

Gene ID:

16784

## Detection Antibody Information

Catalog Number:

84474-4-PBS

Host:

Rabbit

Isotype:

IgG

Purification Method:

Protein A purification

Clone ID:

241893A1

Reactivity:

mouse

GenBank:

NM\_001017959.2

Conjugate:

Unconjugated

Full name:

lysosomal-associated membrane protein 2

Gene ID:

16784

## Applications

Tested Applications:

Sandwich ELISA

Range:

39.1-2500 pg/mL (Sandwich ELISA)

Recommended Dilutions:

It is recommended that this reagent should be titrated in each testing system to obtain optimal results.

## Product Information

MP01356-4 targets CD107b / LAMP2 in immunoassays as a matched antibody pair. Validated in Sandwich ELISA.

Capture antibody: Mouse CD107b / LAMP2 Recombinant antibody, PBS Only (Capture/Detector) 84474-2-PBS (241893E12). 100 µg. Concentration 1 mg/ml.

Detection antibody: Mouse CD107b / LAMP2 Recombinant antibody, PBS Only (Detector) 84474-4-PBS (241893A1). 100 µg. Concentration 1 mg/ml.

Alternative CD107b / LAMP2 matched antibody pairs: MP01356-1, MP01356-2, MP01356-3

Unconjugated rabbit recombinant monoclonal antibody pair in PBS only storage buffer at a concentration of 1 mg/mL, ready for conjugation. Created using Proteintech's proprietary in-house recombinant technology.

Recombinant production enables unrivalled batch-to-batch consistency, easy scale-up, and future security of supply.

Matched antibody pairs are designed for use in a variety of assays and platforms that require matched antibody pairs.

Antibody use should be optimized for each application and assay.

## Storage

Storage:

Store at -80°C.

Storage buffer:

PBS only

For technical support and original validation data for this product please contact:

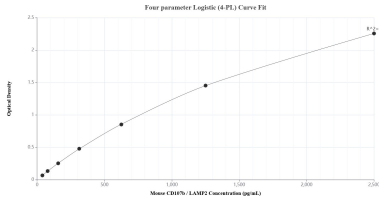
T: 1 (888) 4PTGLAB (1-888-478-4522) (toll free in USA), or 1(312) 455-8498 (outside USA)

E: [proteintech@ptglab.com](mailto:proteintech@ptglab.com)

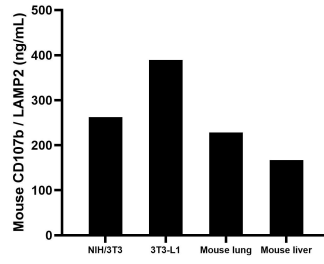
W: [ptglab.com](http://ptglab.com)

This product is exclusively available under Proteintech Group brand and is not available to purchase from any other manufacturer.

## Selected Validation Data



Sandwich ELISA standard curve of MP01356-4, Mouse CD107b / LAMP2 Recombinant Matched Antibody Pair - PBS only. 84474-2-PBS was coated to a plate as the capture antibody and incubated with serial dilutions of standard Eg2029. 84474-4-PBS was HRP conjugated as the detection antibody. Range: 39.1-2500 pg/mL



The mean CD107b / LAMP2 concentration was determined to be 262.0 ng/mL in NIH/3T3 cell extract based on a 3.3 mg/mL extract load, 389.6 ng/mL in 3T3-L1 cell extract based on a 1.3 mg/mL extract load, 228.1 ng/mL in mouse lung cell extract based on a 1.3 mg/mL extract load and 166.9 ng/mL in mouse liver cell extract based on a 1.3 mg/mL extract load.