

For Research Use Only

FKBP11 Recombinant Matched Antibody Pair, PBS Only



Catalog Number:MP01342-2

Capture Antibody Information

Catalog Number:

84478-4-PBS

Host:

Rabbit

Isotype:

IgG

Purification Method:

Protein A purification

Clone ID:

241912H7

Reactivity:

human

Immunogen Catalog Number:

Ag11368

Conjugate:

Unconjugated

Full name:

FK506 binding protein 11, 19 kDa

Gene ID:

51303

Detection Antibody Information

Catalog Number:

84478-3-PBS

Host:

Rabbit

Isotype:

IgG

Purification Method:

Protein A purification

Clone ID:

241912G5

Reactivity:

human

GenBank:

BC027973

Immunogen Catalog Number:

Ag11368

Conjugate:

Unconjugated

Full name:

FK506 binding protein 11, 19 kDa

Gene ID:

51303

Applications

Tested Applications:

Cytometric bead array, Sandwich ELISA

Range:

0.313-40 ng/mL (Cytometric Bead Array)
19.5-1250 pg/mL (Sandwich ELISA)

Recommended Dilutions:

It is recommended that this reagent should be titrated in each testing system to obtain optimal results.

Product Information

MP01342-2 targets FKBP11 in immunoassays as a matched antibody pair. Validated in Cytometric bead array, Sandwich ELISA.

Capture antibody: FKBP11 Recombinant antibody, PBS Only (Capture/Detector) 84478-4-PBS (241912H7). 100 µg. Concentration 1 mg/ml.

Detection antibody: FKBP11 Recombinant antibody, PBS Only (Detector) 84478-3-PBS (241912G5). 100 µg. Concentration 1 mg/ml.

Alternative FKBP11 matched antibody pairs: MP01342-1, MP01342-3

Unconjugated rabbit recombinant monoclonal antibody pair in PBS only storage buffer at a concentration of 1 mg/mL, ready for conjugation. Created using Proteintech's proprietary in-house recombinant technology. Recombinant production enables unrivalled batch-to-batch consistency, easy scale-up, and future security of supply.

Matched antibody pairs are designed for use in a variety of assays and platforms that require matched antibody pairs.

Antibody use should be optimized for each application and assay.

Storage

Storage:

Store at -80°C.

Storage buffer:

PBS only

For technical support and original validation data for this product please contact:

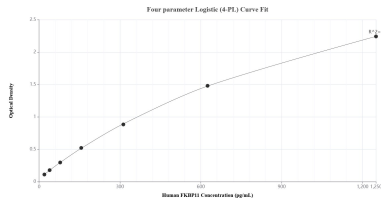
T: 1 (888) 4PTGLAB (1-888-478-4522) (toll free in USA), or 1(312) 455-8498 (outside USA)

E: proteintech@ptglab.com

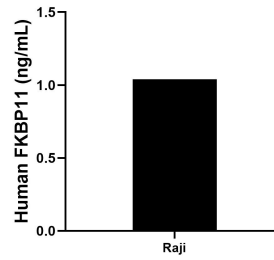
W: ptglab.com

This product is exclusively available under Proteintech Group brand and is not available to purchase from any other manufacturer.

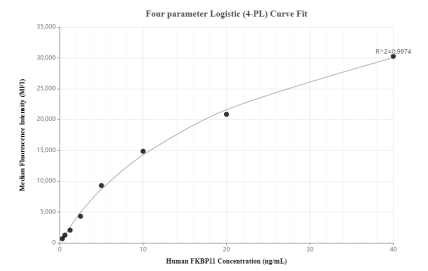
Selected Validation Data



Sandwich ELISA standard curve of MP01342-2, Human FKBP11 Recombinant Matched Antibody Pair - PBS only. 84478-4-PBS was coated to a plate as the capture antibody and incubated with serial dilutions of standard Ag11368. 84478-3-PBS was HRP conjugated as the detection antibody. Range: 19.5-1250 pg/mL.



The mean FKBP11 concentration was determined to be 1.0 ng/mL in Raji cell extract based on a 1.2 mg/mL extract load.



Cytometric bead array standard curve of MP01342-2, FKBP11 Recombinant Matched Antibody Pair, PBS Only. Capture antibody: 84478-4-PBS. Detection antibody: 84478-3-PBS. Standard: Ag11368. Range: 0.313-40 ng/mL.