

For Research Use Only

CSF1R Recombinant Matched Antibody Pair, PBS Only



Catalog Number:MP01340-4

Capture Antibody Information

Catalog Number:
84477-5-PBS

Host:
Rabbit

Isotype:
IgG

Purification Method:
Protein A purification

Clone ID:
241675G4

Reactivity:
human

Conjugate:
Unconjugated

Full name:
colony stimulating factor 1 receptor

Gene ID:
1436

Detection Antibody Information

Catalog Number:
84477-4-PBS

Host:
Rabbit

Isotype:
IgG

Purification Method:
Protein A purification

Clone ID:
241675G3

Reactivity:
human

GenBank:
BC047521

Conjugate:
Unconjugated

Full name:
colony stimulating factor 1 receptor

Gene ID:
1436

Applications

Tested Applications:
Sandwich ELISA

Range:
78.1-5000 pg/mL (Sandwich ELISA)

Recommended Dilutions:
It is recommended that this reagent should be titrated in each testing system to obtain optimal results.

Product Information

MP01340-4 targets CSF1R in immunoassays as a matched antibody pair. Validated in Sandwich ELISA.

Capture antibody: CSF1R Recombinant antibody, PBS Only (Capture) 84477-5-PBS (241675G4). 100 µg. Concentration 1 mg/ml.

Detection antibody: CSF1R Recombinant antibody, PBS Only (Capture/Detector) 84477-4-PBS (241675G3). 100 µg. Concentration 1 mg/ml.

Alternative CSF1R matched antibody pairs: MP01340-1, MP01340-2, MP01340-3

Unconjugated rabbit recombinant monoclonal antibody pair in PBS only storage buffer at a concentration of 1 mg/mL, ready for conjugation. Created using Proteintech's proprietary in-house recombinant technology. Recombinant production enables unrivalled batch-to-batch consistency, easy scale-up, and future security of supply.

Matched antibody pairs are designed for use in a variety of assays and platforms that require matched antibody pairs.

Antibody use should be optimized for each application and assay.

Storage

Storage:
Store at -80°C.
Storage buffer:
PBS only

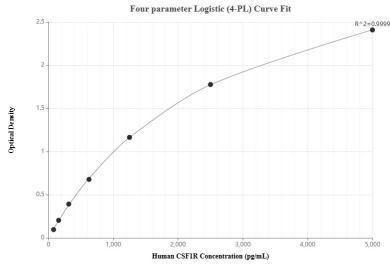
For technical support and original validation data for this product please contact:

T: 1 (888) 4PTGLAB (1-888-478-4522) (toll free in USA), or 1(312) 455-8498 (outside USA)

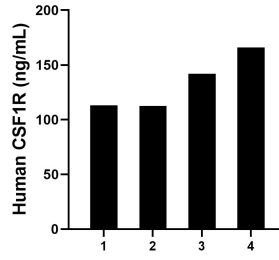
E: proteintech@ptglab.com
W: ptglab.com

This product is exclusively available under Proteintech Group brand and is not available to purchase from any other manufacturer.

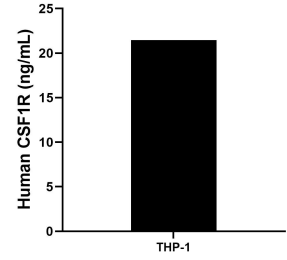
Selected Validation Data



Sandwich ELISA standard curve of MP01340-4, Human CSF1R Recombinant Matched Antibody Pair - PBS only. 84477-5-PBS was coated to a plate as the capture antibody and incubated with serial dilutions of standard RP00001. 84477-4-PBS was HRP conjugated as the detection antibody. Range: 78.1-5000 pg/mL



Serum of four individual healthy human donors was measured. The human CSF1R concentration of detected samples was determined to be 133.41 ng/mL with a range of 112.57 - 165.97 ng/mL



The mean CSF1R concentration was determined to be 21.46 ng/mL in THP-1 cell extract based on a 4.8 mg/mL extract load.