

For Research Use Only

Neuropilin 1 Recombinant Matched Antibody Pair, PBS Only



Catalog Number:MP01310-4

Capture Antibody Information

Catalog Number:

84429-2-PBS

Host:

Rabbit

Isotype:

IgG

Purification Method:

Protein A purification

Clone ID:

241812B7

Reactivity:

human

Conjugate:

Unconjugated

Full name:

neuropilin 1

Gene ID:

8829

Detection Antibody Information

Catalog Number:

84429-4-PBS

Host:

Rabbit

Isotype:

IgG

Purification Method:

Protein A purification

Clone ID:

241812E11

Reactivity:

human

GenBank:

BC007533

Conjugate:

Unconjugated

Full name:

neuropilin 1

Gene ID:

8829

Applications

Tested Applications:

Sandwich ELISA

Range:

78.1-5000 pg/mL (Sandwich ELISA)

Recommended Dilutions:

It is recommended that this reagent should be titrated in each testing system to obtain optimal results.

Product Information

MP01310-4 targets Neuropilin 1 in immunoassays as a matched antibody pair. Validated in Sandwich ELISA.

Capture antibody: NRP1 Recombinant antibody, PBS Only (Capture) 84429-2-PBS (241812B7). 100 µg. Concentration 1 mg/mL.

Detection antibody: NRP1 Recombinant antibody, PBS Only (Capture/Detector) 84429-4-PBS (241812E11). 100 µg. Concentration 1 mg/mL.

Unconjugated rabbit recombinant monoclonal antibody pair in PBS only storage buffer at a concentration of 1 mg/mL, ready for conjugation. Created using Proteintech's proprietary in-house recombinant technology. Recombinant production enables unrivalled batch-to-batch consistency, easy scale-up, and future security of supply.

Matched antibody pairs are designed for use in a variety of assays and platforms that require matched antibody pairs.

Antibody use should be optimized for each application and assay.

Storage

Storage:

Store at -80°C.

Storage buffer:

PBS only

For technical support and original validation data for this product please contact:

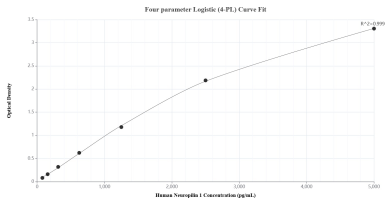
T: 1 (888) 4PTGLAB (1-888-478-4522) (toll free in USA), or 1(312) 455-8498 (outside USA)

E: proteintech@ptglab.com

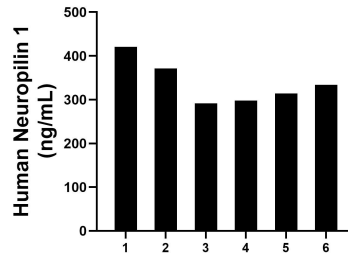
W: ptglab.com

This product is exclusively available under Proteintech Group brand and is not available to purchase from any other manufacturer.

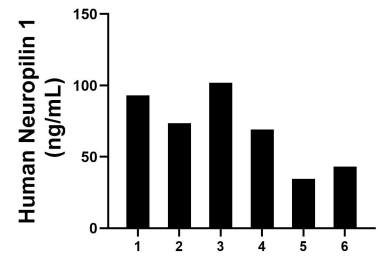
Selected Validation Data



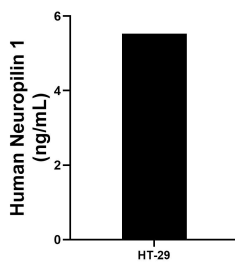
Sandwich ELISA standard curve of MP01310-4, Human Neuropilin 1 Recombinant Matched Antibody Pair - PBS only. 84429-2-PBS was coated to a plate as the capture antibody and incubated with serial dilutions of standard Eg2331. 84429-4-PBS was HRP conjugated as the detection antibody. Range: 78.1-5000 pg/mL



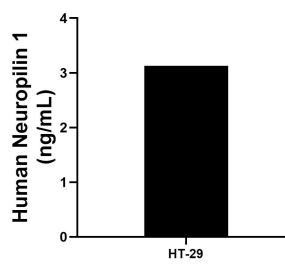
Serum of six individual healthy human donors was measured. The Neuropilin 1 concentration of detected samples was determined to be 338.2 ng/mL with a range of 291.5-420.8 ng/mL.



Human milk of six individual healthy human donors was measured. The Neuropilin 1 concentration of detected samples was determined to be 69.2 ng/mL with a range of 34.6-102.0 ng/mL.



The mean Neuropilin 1 concentration was determined to be 5.5 ng/mL in HT-29 cell extract based on a 1.5 mg/mL extract load.



HT-29 were cultured in DMEM supplemented with 10% fetal bovine serum, 2.5 mL-glutamine, 100 U/mL penicillin, and 100 µg/mL streptomycin sulfate. An aliquot of the cell culture supernate was removed, assayed for human Neuropilin 1, and measured 3.1 ng/mL.