

# Mouse CD157 Recombinant Matched Antibody Pair, PBS Only

Catalog Number: **MP01303-4**

## Capture Antibody Information

**Catalog Number:**  
84417-4-PBS  
**Host:**  
Rabbit  
**Isotype:**  
IgG  
**Purification Method:**  
Protein A purification

**Clone ID:**  
241822H1  
**Reactivity:**  
mouse

**Conjugate:**  
Unconjugated  
**Full name:**  
bone marrow stromal cell antigen 1  
**Gene ID:**  
12182

## Detection Antibody Information

**Catalog Number:**  
84417-1-PBS  
**Host:**  
Rabbit  
**Isotype:**  
IgG  
**Purification Method:**  
Protein A purification

**Clone ID:**  
241822A5  
**Reactivity:**  
mouse  
**GenBank:**

**Conjugate:**  
Unconjugated  
**Full name:**  
bone marrow stromal cell antigen 1  
**Gene ID:**  
12182

## Applications

**Tested Applications:**  
Sandwich ELISA

**Range:**  
48.8-1563 pg/mL (Sandwich ELISA)

**Recommended Dilutions:**  
It is recommended that this reagent should be titrated in each testing system to obtain optimal results.

## Product Information

MP01303-4 targets CD157 in immunoassays as a matched antibody pair. Validated in Sandwich ELISA.

Capture antibody: Mouse CD157 Recombinant antibody, PBS Only (Capture/Detector) 84417-4-PBS (241822H1). 100 µg. Concentration 1 mg/mL.

Detection antibody: Mouse CD157 Recombinant antibody, PBS Only (Capture/Detector) 84417-1-PBS (241822A5). 100 µg. Concentration 1 mg/mL.

Alternative CD157 matched antibody pairs: MP01225-1, MP01225-2, MP01225-3, MP01225-4, MP01303-1, MP01303-2, MP01303-3

Unconjugated rabbit recombinant monoclonal antibody pair in PBS only storage buffer at a concentration of 1 mg/mL, ready for conjugation. Created using Proteintech's proprietary in-house recombinant technology. Recombinant production enables unrivalled batch-to-batch consistency, easy scale-up, and future security of supply.

Matched antibody pairs are designed for use in a variety of assays and platforms that require matched antibody pairs.

Antibody use should be optimized for each application and assay.

## Storage

**Storage:**  
Store at -80°C.  
**Storage buffer:**  
PBS only

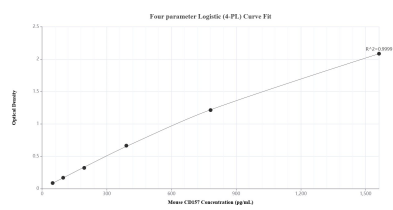
For technical support and original validation data for this product please contact:

T: 1 (888) 4PTGLAB (1-888-478-4522) (toll free in USA), or 1(312) 455-8498 (outside USA)

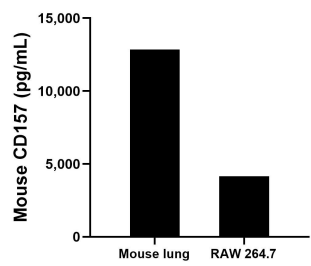
E: [proteintech@ptglab.com](mailto:proteintech@ptglab.com)  
W: [ptglab.com](http://ptglab.com)

**This product is exclusively available under Proteintech Group brand and is not available to purchase from any other manufacturer.**

## Selected Validation Data



Sandwich ELISA standard curve of MP01303-4, Mouse CD157 Recombinant Matched Antibody Pair - PBS only. 84417-4-PBS was coated to a plate as the capture antibody and incubated with serial dilutions of standard Eg1528. 84417-1-PBS was HRP conjugated as the detection antibody. Range: 48.8-1563 pg/mL.



The mean CD157 concentration was determined to be 12,854.1 pg/mL in mouse lung cell extract based on a 1.6 mg/mL extract load and 4,152.4 pg/mL in RAW 264.7 cell extract based on a 4.8 mg/mL extract load.