

For Research Use Only

# CCL20/MIP-3 alpha Recombinant Matched Antibody Pair, PBS Only



Catalog Number:MP01301-4

## Capture Antibody Information

Catalog Number:  
84413-1-PBS

Host:  
Rabbit

Isotype:  
IgG

Purification Method:  
Protein A purification

Clone ID:  
241694A5

Reactivity:  
human

Conjugate:  
Unconjugated

Full name:  
chemokine (C-C motif) ligand 20

Gene ID:  
6364

## Detection Antibody Information

Catalog Number:  
84413-5-PBS

Host:  
Rabbit

Isotype:  
IgG

Purification Method:  
Protein A purification

Clone ID:  
241694D5

Reactivity:  
human

GenBank:  
NM\_004591.3

Conjugate:  
Unconjugated

Full name:  
chemokine (C-C motif) ligand 20

Gene ID:  
6364

## Applications

Tested Applications:  
Sandwich ELISA

Range:  
42.2-2700 pg/mL (Sandwich ELISA)

Recommended Dilutions:  
It is recommended that this reagent should be titrated in each testing system to obtain optimal results.

## Product Information

MP01301-4 targets CCL20/MIP-3 alpha in immunoassays as a matched antibody pair. Validated in Sandwich ELISA.

Capture antibody: CCL20/MIP-3 alpha Recombinant antibody, PBS Only (Capture) 84413-1-PBS (241694A5). 100 µg. Concentration 1 mg/mL.

Detection antibody: CCL20 Recombinant antibody, PBS Only (Detector) 84413-5-PBS (241694D5). 100 µg. Concentration 1 mg/mL.

Unconjugated rabbit recombinant monoclonal antibody pair in PBS only storage buffer at a concentration of 1 mg/mL, ready for conjugation. Created using Proteintech's proprietary in-house recombinant technology. Recombinant production enables unrivalled batch-to-batch consistency, easy scale-up, and future security of supply.

Matched antibody pairs are designed for use in a variety of assays and platforms that require matched antibody pairs.

Antibody use should be optimized for each application and assay.

## Storage

Storage:  
Store at -80°C.  
Storage buffer:  
PBS only

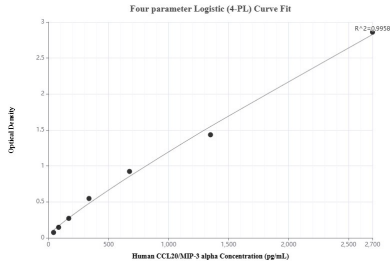
For technical support and original validation data for this product please contact:

T: 1 (888) 4PTGLAB (1-888-478-4522) (toll free in USA), or 1(312) 455-8498 (outside USA)

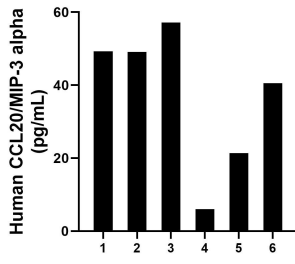
E: [proteintech@ptglab.com](mailto:proteintech@ptglab.com)  
W: [ptglab.com](http://ptglab.com)

This product is exclusively available under Proteintech Group brand and is not available to purchase from any other manufacturer.

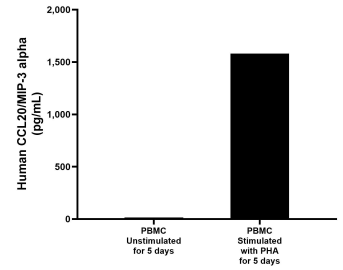
## Selected Validation Data



Sandwich ELISA standard curve of MP01301-4, Human CCL20/MIP-3 alpha Recombinant Matched Antibody Pair - PBS only. 84413-1-PBS was coated to a plate as the capture antibody and incubated with serial dilutions of standard Eg2398. 84413-5-PBS was HRP conjugated as the detection antibody. Range: 42.2-2700 pg/mL



Serum of six individual healthy human donors was measured. The human CCL20/MIP-3 alpha concentration of detected samples was determined to be 37.3 pg/mL with a range of 6.0 - 57.1 pg/mL



Human peripheral blood mononuclear cells (PBMC) were cultured unstimulated or stimulated with 10 µg/mL PHA for 5 days. The mean CCL20/MIP-3 alpha concentration was determined to be 14.8 pg/mL in unstimulated PBMC supernatant, 1,579.6 pg/mL in PHA stimulated PBMC supernatant.