

For Research Use Only



Mouse CEACAM-1/CD66a Recombinant Matched Antibody Pair, PBS Only

Catalog Number:MP01297-2

Capture Antibody Information

Catalog Number:
84409-4-PBS
Host:
Rabbit
Isotype:
IgG
Purification Method:
Protein A purification

Clone ID:
241856H5
Reactivity:
mouse

Conjugate:
Unconjugated
Full name:
carcinoembryonic antigen-related
cell adhesion molecule 1
Gene ID:
26365

Detection Antibody Information

Catalog Number:
84409-3-PBS
Host:
Rabbit
Isotype:
IgG
Purification Method:
Protein A purification

Clone ID:
241856E4
Reactivity:
mouse
GeneBank:

Conjugate:
Unconjugated
Full name:
carcinoembryonic antigen-related
cell adhesion molecule 1
Gene ID:
26365

Applications

Tested Applications:
Cytometric bead array, Sandwich
ELISA

Range:
0.313-40 ng/mL (Cytometric Bead
Array)
39.1-2500 pg/mL (Sandwich ELISA)

Recommended Dilutions:
It is recommended that this reagent
should be titrated in each testing
system to obtain optimal results.

Product Information

MP01297-2 targets CEACAM-1/CD66a in immunoassays as a matched antibody pair. Validated in Cytometric bead array, Sandwich ELISA.

Capture antibody: Mouse CEACAM-1/CD66a Recombinant antibody, PBS Only (Capture/Detector) 84409-4-PBS (241856H5). 100 µg. Concentration 1 mg/ml.

Detection antibody: Mouse CEACAM-1/CD66a Recombinant antibody, PBS Only (Capture/Detector) 84409-3-PBS (241856E4). 100 µg. Concentration 1 mg/ml.

Alternative CEACAM-1/CD66a matched antibody pairs: MP00520-1, MP01297-1, MP01297-3

Unconjugated rabbit recombinant monoclonal antibody pair in PBS only storage buffer at a concentration of 1 mg/mL, ready for conjugation. Created using Proteintech's proprietary in-house recombinant technology. Recombinant production enables unrivalled batch-to-batch consistency, easy scale-up, and future security of supply.

Matched antibody pairs are designed for use in a variety of assays and platforms that require matched antibody pairs.

Antibody use should be optimized for each application and assay.

Storage

Storage:
Store at -80°C.
Storage buffer:
PBS only

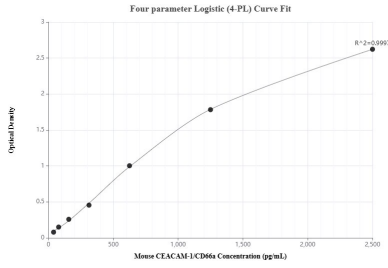
For technical support and original validation data for this product please contact:

T: 1 (888) 4PTGLAB (1-888-478-4522) (toll free
in USA), or 1(312) 455-8498 (outside USA)

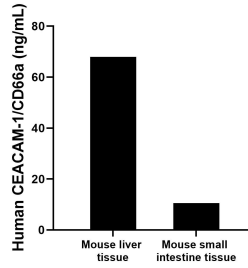
E: proteintech@ptglab.com
W: ptglab.com

This product is exclusively available under Proteintech Group brand and is not available to purchase from any other manufacturer.

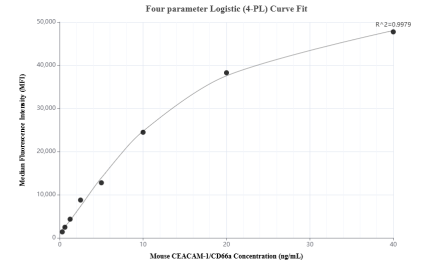
Selected Validation Data



Sandwich ELISA standard curve of MP01297-2, Mouse CEACAM-1/CD66a Recombinant Matched Antibody Pair - PBS only. 84409-4-PBS was coated to a plate as the capture antibody and incubated with serial dilutions of standard Eg1423. 84409-3-PBS was HRP conjugated as the detection antibody. Range: 39.1-2500 pg/mL



The mean CEACAM-1/CD66a concentration was determined to be 67.98 ng/mL in mouse liver tissue extract based on a 3.7 mg/mL extract load and 10.51 ng/mL in mouse small intestine tissue extract based on a 1.6 mg/mL extract load.



Cytometric bead array standard curve of MP01297-2, MOUSE CEACAM-1/CD66a Recombinant Matched Antibody Pair, PBS Only. Capture antibody: 84409-4-PBS. Detection antibody: 84409-3-PBS. Standard: Eg1423. Range: 0.313-40 ng/mL