

For Research Use Only

DDR1 Recombinant Matched Antibody Pair, PBS Only



Catalog Number:MP01290-4

Capture Antibody Information

Catalog Number:
84438-5-PBS
Host:
Rabbit
Isotype:
IgG
Purification Method:
Protein A purification

Clone ID:
241796C2
Reactivity:
human

Conjugate:
Unconjugated
Full name:
discoidin domain receptor tyrosine kinase 1
Gene ID:
780

Detection Antibody Information

Catalog Number:
84438-3-PBS
Host:
Rabbit
Isotype:
IgG
Purification Method:
Protein A purification

Clone ID:
241796G1
Reactivity:
human
GenBank:
NM_001297654.2

Conjugate:
Unconjugated
Full name:
discoidin domain receptor tyrosine kinase 1
Gene ID:
780

Applications

Tested Applications:
Sandwich ELISA

Range:
19.5-1250 pg/mL (Sandwich ELISA)

Recommended Dilutions:
It is recommended that this reagent should be titrated in each testing system to obtain optimal results.

Product Information

MP01290-4 targets DDR1 in immunoassays as a matched antibody pair. Validated in Sandwich ELISA.
Capture antibody: DDR1 Recombinant antibody, PBS Only (Capture) 84438-5-PBS (241796C2). 100 µg. Concentration 1 mg/mL.
Detection antibody: DDR1 Recombinant antibody, PBS Only (Detector) 84438-3-PBS (241796G1). 100 µg. Concentration 1 mg/mL.
Alternative DDR1 matched antibody pairs: MP01290-1, MP01290-2, MP01290-3
Unconjugated rabbit recombinant monoclonal antibody pair in PBS only storage buffer at a concentration of 1 mg/mL, ready for conjugation. Created using Proteintech's proprietary in-house recombinant technology. Recombinant production enables unrivalled batch-to-batch consistency, easy scale-up, and future security of supply.
Matched antibody pairs are designed for use in a variety of assays and platforms that require matched antibody pairs.
Antibody use should be optimized for each application and assay.

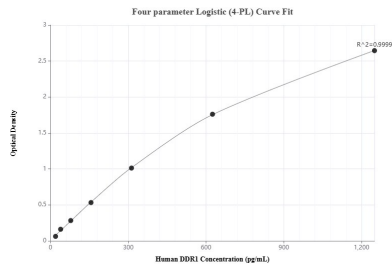
Storage

Storage:
Store at -80°C.
Storage buffer:
PBS only

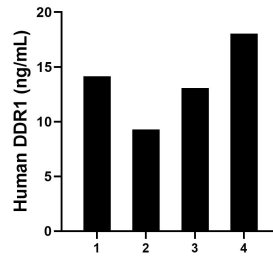
For technical support and original validation data for this product please contact:
T: 1 (888) 4PTGLAB (1-888-478-4522) (toll free in USA), or 1(312) 455-8498 (outside USA) E: proteintech@ptglab.com
W: ptglab.com

This product is exclusively available under Proteintech Group brand and is not available to purchase from any other manufacturer.

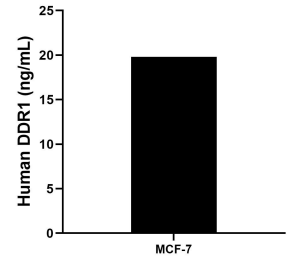
Selected Validation Data



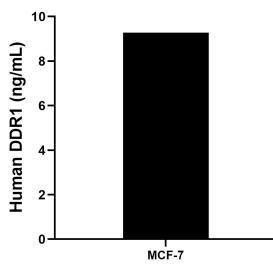
Sandwich ELISA standard curve of MP01290-4, Human DDR1 Recombinant Matched Antibody Pair - PBS only. 84438-5-PBS was coated to a plate as the capture antibody and incubated with serial dilutions of standard Eg1675. 84438-3-PBS was HRP conjugated as the detection antibody. Range: 19.5-1250 pg/mL



Serum of four individual healthy human donors was measured. The human DDR1 concentration of detected samples was determined to be 13.63 ng/mL with a range of 9.29 - 18.03 ng/mL.



MCF-7 human breast cancer cells (5×10^6 cells/mL) were cultured in DMEM supplemented with 10% fetal bovine serum, 4 mM L-glutamine, 4500mg/L glucose, 100 U/mL penicillin, and 100 µg/mL streptomycin sulfate. An aliquot of the cell culture supernate was removed, assayed for human DDR1, and measured 19.81 ng/mL.



The mean DDR1 concentration was determined to be 9.28 ng/mL in MCF-7 cell extract based on a 1.2 mg/mL extract load.