

For Research Use Only



# DDR1 Recombinant Matched Antibody Pair, PBS Only

Catalog Number:MP01290-3

## Capture Antibody Information

**Catalog Number:**  
84438-4-PBS  
**Host:**  
Rabbit  
**Isotype:**  
IgG  
**Purification Method:**  
Protein A purification

**Clone ID:**  
241796H5  
**Reactivity:**  
human

**Conjugate:**  
Unconjugated  
**Full name:**  
discoidin domain receptor tyrosine kinase 1  
**Gene ID:**  
780

## Detection Antibody Information

**Catalog Number:**  
84438-3-PBS  
**Host:**  
Rabbit  
**Isotype:**  
IgG  
**Purification Method:**  
Protein A purification

**Clone ID:**  
241796G1  
**Reactivity:**  
human  
**GenBank:**  
NM\_001297654.2

**Conjugate:**  
Unconjugated  
**Full name:**  
discoidin domain receptor tyrosine kinase 1  
**Gene ID:**  
780

## Applications

**Tested Applications:**  
Cytometric bead array

**Range:**  
0.313-40 ng/mL (Cytometric Bead Array)

**Recommended Dilutions:**  
It is recommended that this reagent should be titrated in each testing system to obtain optimal results.

## Product Information

MP01290-3 targets DDR1 in immunoassays as a matched antibody pair. Validated in Cytometric bead array.

Capture antibody: DDR1 Recombinant antibody, PBS Only (Capture) 84438-4-PBS (241796H5). 100 µg. Concentration 1 mg/mL.

Detection antibody: DDR1 Recombinant antibody, PBS Only (Detector) 84438-3-PBS (241796G1). 100 µg. Concentration 1 mg/mL.

Alternative DDR1 matched antibody pairs: MP01290-1, MP01290-2

Unconjugated rabbit recombinant monoclonal antibody pair in PBS only storage buffer at a concentration of 1 mg/mL, ready for conjugation. Created using Proteintech's proprietary in-house recombinant technology. Recombinant production enables unrivalled batch-to-batch consistency, easy scale-up, and future security of supply.

Matched antibody pairs are designed for use in a variety of assays and platforms that require matched antibody pairs.

Antibody use should be optimized for each application and assay.

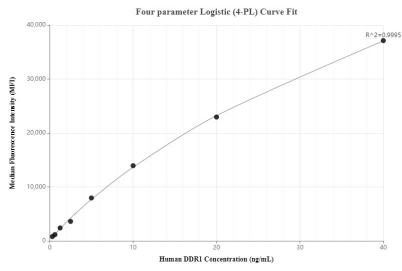
## Storage

**Storage:**  
Store at -80°C.  
**Storage buffer:**  
PBS only

For technical support and original validation data for this product please contact:  
T: 1 (888) 4PTGLAB (1-888-478-4522) (toll free in USA), or 1(312) 455-8498 (outside USA) E: [proteintech@ptglab.com](mailto:proteintech@ptglab.com) W: [ptglab.com](http://ptglab.com)

This product is exclusively available under Proteintech Group brand and is not available to purchase from any other manufacturer.

## Selected Validation Data



Cytometric bead array standard curve of MP01290-3, DDR1 Recombinant Matched Antibody Pair, PBS Only. Capture antibody: 84438-4-PBS. Detection antibody: 84438-3-PBS. Standard: Eg1675. Range: 0.313-40 ng/mL