

For Research Use Only

TSLP Recombinant Matched Antibody Pair, PBS Only



Catalog Number:MP01287-3

Capture Antibody Information

Catalog Number:
84437-5-PBS

Host:
Rabbit

Isotype:
IgG

Purification Method:
Protein A purification

Clone ID:
241821F10

Reactivity:
human

Conjugate:
Unconjugated

Full name:
thymic stromal lymphopietin

Gene ID:
85480

Detection Antibody Information

Catalog Number:
84437-1-PBS

Host:
Rabbit

Isotype:
IgG

Purification Method:
Protein A purification

Clone ID:
241821C4

Reactivity:
human

GenBank:
NM_033035.5

Conjugate:
Unconjugated

Full name:
thymic stromal lymphopietin

Gene ID:
85480

Applications

Tested Applications:
Cytometric bead array

Range:
1.25-80 ng/mL (Cytometric Bead Array)

Recommended Dilutions:
It is recommended that this reagent should be titrated in each testing system to obtain optimal results.

Product Information

MP01287-3 targets TSLP in immunoassays as a matched antibody pair. Validated in Cytometric bead array.

Capture antibody: TSLP Recombinant antibody, PBS Only (Capture) 84437-5-PBS (241821F10). 100 µg. Concentration 1 mg/ml.

Detection antibody: TSLP Recombinant antibody, PBS Only (Detector) 84437-1-PBS (241821C4). 100 µg. Concentration 1 mg/ml.

Alternative TSLP matched antibody pairs: MP01287-1, MP01287-2, MP50325-1, MP50325-2

Unconjugated rabbit recombinant monoclonal antibody pair in PBS only storage buffer at a concentration of 1 mg/mL, ready for conjugation. Created using Proteintech's proprietary in-house recombinant technology. Recombinant production enables unrivalled batch-to-batch consistency, easy scale-up, and future security of supply.

Matched antibody pairs are designed for use in a variety of assays and platforms that require matched antibody pairs.

Antibody use should be optimized for each application and assay.

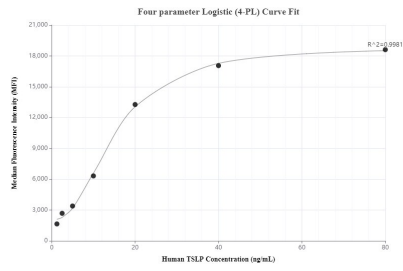
Storage

Storage:
Store at -80°C.
Storage buffer:
PBS only

For technical support and original validation data for this product please contact:
T: 1 (888) 4PTGLAB (1-888-478-4522) (toll free in USA), or 1(312) 455-8498 (outside USA) E: proteintech@ptglab.com W: ptglab.com

This product is exclusively available under Proteintech Group brand and is not available to purchase from any other manufacturer.

Selected Validation Data



Cytometric bead array standard curve of MP01287-3, TSLP Recombinant Matched Antibody Pair, PBS Only. Capture antibody: 84437-5-PBS. Detection antibody: 84437-1-PBS. Standard: Eg1238. Range: 1.25-80 ng/mL