

For Research Use Only

Mouse MPO Recombinant Matched Antibody Pair, PBS Only



Catalog Number:MP01284-4

Capture Antibody Information

Catalog Number:
84436-3-PBS

Host:
Rabbit

Isotype:
IgG

Purification Method:
Protein A purification

Clone ID:
241839F8

Reactivity:
mouse

Conjugate:
Unconjugated

Full name:
myeloperoxidase

Gene ID:
17523

Detection Antibody Information

Catalog Number:
84436-4-PBS

Host:
Rabbit

Isotype:
IgG

Purification Method:
Protein A purification

Clone ID:
241839F3

Reactivity:
mouse

GenBank:
AAR99349

Conjugate:
Unconjugated

Full name:
myeloperoxidase

Gene ID:
17523

Applications

Tested Applications:
Sandwich ELISA

Range:
9.77-625 pg/mL (Sandwich ELISA)

Recommended Dilutions:
It is recommended that this reagent should be titrated in each testing system to obtain optimal results.

Product Information

MP01284-4 targets MPO in immunoassays as a matched antibody pair. Validated in Sandwich ELISA.

Capture antibody: Mouse Myeloperoxidase Recombinant antibody, PBS Only (Capture/Detector) 84436-3-PBS (241839F8). 100 µg. Concentration 1 mg/ml.

Detection antibody: Mouse MPO Recombinant antibody, PBS Only (Detector) 84436-4-PBS (241839F3). 100 µg. Concentration 1 mg/ml.

Unconjugated rabbit recombinant monoclonal antibody pair in PBS only storage buffer at a concentration of 1 mg/mL, ready for conjugation. Created using Proteintech's proprietary in-house recombinant technology. Recombinant production enables unrivalled batch-to-batch consistency, easy scale-up, and future security of supply.

Matched antibody pairs are designed for use in a variety of assays and platforms that require matched antibody pairs.

Antibody use should be optimized for each application and assay.

Storage

Storage:
Store at -80°C.
Storage buffer:
PBS only

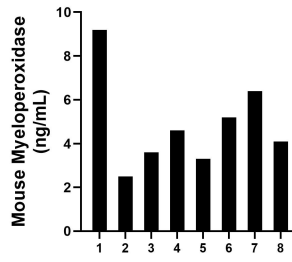
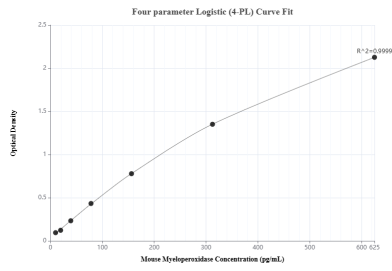
For technical support and original validation data for this product please contact:

T: 1 (888) 4PTGLAB (1-888-478-4522) (toll free in USA), or 1(312) 455-8498 (outside USA)

E: proteintech@ptglab.com
W: ptglab.com

This product is exclusively available under Proteintech Group brand and is not available to purchase from any other manufacturer.

Selected Validation Data



Sandwich ELISA standard curve of MP01284-4, Mouse MPO Recombinant Matched Antibody Pair - PBS only. 84436-3-PBS was coated to a plate as the capture antibody and incubated with serial dilutions of standard Eg0702. 84436-4-PBS was HRP conjugated as the detection antibody. Range: 9.77-625 pg/mL

Serum of eight mice was measured. The mouse MPO concentration of detected samples was determined to be 4.86 ng/mL with a range of 2.54 - 9.19 ng/mL.