

For Research Use Only

# CD45 Recombinant Matched Antibody Pair, PBS Only



Catalog Number:MP01280-3

## Capture Antibody Information

**Catalog Number:**  
84405-4-PBS  
**Host:**  
Rabbit  
**Isotype:**  
IgG  
**Purification Method:**  
Protein A purification

**Clone ID:**  
241671G12  
**Reactivity:**  
human

**Conjugate:**  
Unconjugated  
**Full name:**  
protein tyrosine phosphatase, receptor type, C  
**Gene ID:**  
5788

## Detection Antibody Information

**Catalog Number:**  
84405-2-PBS  
**Host:**  
Rabbit  
**Isotype:**  
IgG  
**Purification Method:**  
Protein A purification

**Clone ID:**  
241670F1  
**Reactivity:**  
human  
**GenBank:**

**Conjugate:**  
Unconjugated  
**Full name:**  
protein tyrosine phosphatase, receptor type, C  
**Gene ID:**  
5788

## Applications

**Tested Applications:**  
Sandwich ELISA

**Range:**  
39.1-2500 pg/mL (Sandwich ELISA)

**Recommended Dilutions:**  
It is recommended that this reagent should be titrated in each testing system to obtain optimal results.

## Product Information

MP01280-3 targets CD45 in immunoassays as a matched antibody pair. Validated in Sandwich ELISA.

Capture antibody: CD45(220-577) Recombinant antibody, PBS Only (Capture) 84405-4-PBS (241671G12). 100 µg. Concentration 1 mg/ml.

Detection antibody: CD45(220-577) Recombinant antibody, PBS Only (Capture/Detector) 84405-2-PBS (241670F1). 100 µg. Concentration 1 mg/ml.

Unconjugated rabbit recombinant monoclonal antibody pair in PBS only storage buffer at a concentration of 1 mg/mL, ready for conjugation. Created using Proteintech's proprietary in-house recombinant technology. Recombinant production enables unrivalled batch-to-batch consistency, easy scale-up, and future security of supply.

Matched antibody pairs are designed for use in a variety of assays and platforms that require matched antibody pairs.

Antibody use should be optimized for each application and assay.

## Storage

**Storage:**  
Store at -80°C.  
**Storage buffer:**  
PBS only

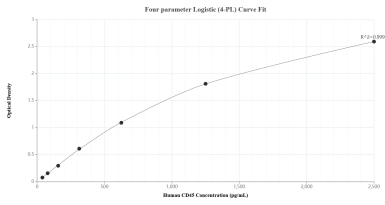
For technical support and original validation data for this product please contact:

T: 1 (888) 4PTGLAB (1-888-478-4522) (toll free in USA), or 1(312) 455-8498 (outside USA)

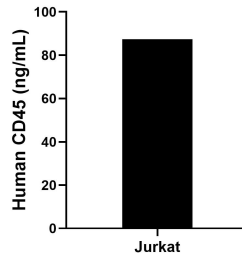
E: [proteintech@ptglab.com](mailto:proteintech@ptglab.com)  
W: [ptglab.com](http://ptglab.com)

**This product is exclusively available under Proteintech Group brand and is not available to purchase from any other manufacturer.**

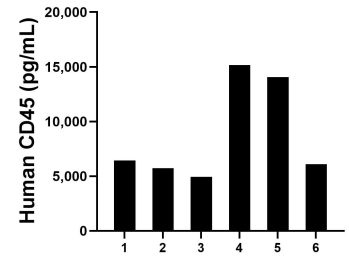
## Selected Validation Data



Sandwich ELISA standard curve of MP01280-3, Human CD45 Recombinant Matched Antibody Pair - PBS only. 84405-4-PBS was coated to a plate as the capture antibody and incubated with serial dilutions of standard Eg2486. 84405-2-PBS was HRP conjugated as the detection antibody. Range: 39.1-2500 pg/mL



The mean CD45 concentration was determined to be 87.3 ng/mL in Jurkat cell extract based on a 1.5 mg/mL extract load.



Plasma of six individual healthy human donors was measured. The CD45 concentration of detected samples was determined to be 8,737.3 pg/mL with a range of 4,942.4 -15,153.0 pg/mL.