

For Research Use Only



ZBP1 Recombinant Matched Antibody Pair, PBS Only

Catalog Number:MP01267-1

Capture Antibody Information

Catalog Number:
84396-1-PBS

Host:
Rabbit

Isotype:
IgG

Purification Method:
Protein A purification

Clone ID:
241582B7

Reactivity:
human

Immunogen Catalog Number:
Ag4119

Conjugate:
Unconjugated

Full name:
Z-DNA binding protein 1

Gene ID:
81030

Detection Antibody Information

Catalog Number:
84396-2-PBS

Host:
Rabbit

Isotype:
IgG

Purification Method:
Protein A purification

Clone ID:
241582E2

Reactivity:
human

GenBank:
BC028218

Immunogen Catalog Number:
Ag4119

Conjugate:
Unconjugated

Full name:
Z-DNA binding protein 1

Gene ID:
81030

Applications

Tested Applications:
Cytometric bead array, Sandwich ELISA

Range:
0.781-100 ng/mL (Cytometric Bead Array)
156-5000 pg/mL (Sandwich ELISA)

Recommended Dilutions:
It is recommended that this reagent should be titrated in each testing system to obtain optimal results.

Product Information

MP01267-1 targets ZBP1 in immunoassays as a matched antibody pair. Validated in Cytometric bead array, Sandwich ELISA.

Capture antibody: ZBP1 Recombinant antibody, PBS Only (Capture) 84396-1-PBS (241582B7). 100 µg. Concentration 1 mg/mL.

Detection antibody: ZBP1 Recombinant antibody, PBS Only (Detector) 84396-2-PBS (241582E2). 100 µg. Concentration 1 mg/mL.

Unconjugated rabbit recombinant monoclonal antibody pair in PBS only storage buffer at a concentration of 1 mg/mL, ready for conjugation. Created using Proteintech's proprietary in-house recombinant technology. Recombinant production enables unrivalled batch-to-batch consistency, easy scale-up, and future security of supply.

Matched antibody pairs are designed for use in a variety of assays and platforms that require matched antibody pairs.

Antibody use should be optimized for each application and assay.

Storage

Storage:
Store at -80°C.
Storage buffer:
PBS only

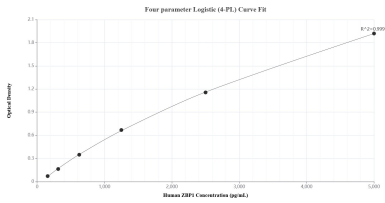
For technical support and original validation data for this product please contact:

T: 1 (888) 4PTGLAB (1-888-478-4522) (toll free in USA), or 1(312) 455-8498 (outside USA)

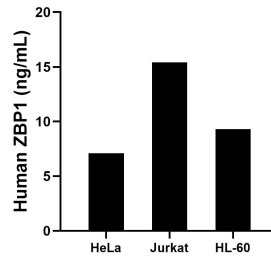
E: proteintech@ptglab.com
W: ptglab.com

This product is exclusively available under Proteintech Group brand and is not available to purchase from any other manufacturer.

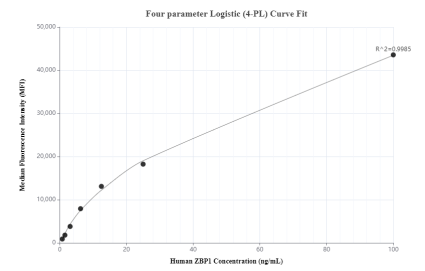
Selected Validation Data



Sandwich ELISA standard curve of MP01267-1, Human ZBP1 Recombinant Matched Antibody Pair - PBS only. 84396-1-PBS was coated to a plate as the capture antibody and incubated with serial dilutions of standard Ag4119. 84396-2-PBS was HRP conjugated as the detection antibody. Range: 156-5000 pg/mL



The mean ZBP1 concentration was determined to be 7.1 ng/mL in HeLa cell extract based on a 2.8 mg/mL extract load, 15.4 ng/mL in Jurkat cell extract based on a 1.5 mg/mL extract load and 9.3 ng/mL in HL-60 cell extract based on a 1.4 mg/mL extract load.



Cytometric bead array standard curve of MP01267-1, ZBP1 Recombinant Matched Antibody Pair, PBS Only. Capture antibody: 84396-1-PBS. Detection antibody: 84396-2-PBS. Standard: Ag4119. Range: 0.781-100 ng/mL