

For Research Use Only

IGFBP6 Recombinant Matched Antibody Pair, PBS Only



Catalog Number:MP01229-1

Capture Antibody Information

Catalog Number:
84364-2-PBS
Host:
Rabbit
Isotype:
IgG
Purification Method:
Protein A purification

Clone ID:
241724C8
Reactivity:
human

Conjugate:
Unconjugated
Full name:
insulin-like growth factor binding protein 6
Gene ID:
3489

Detection Antibody Information

Catalog Number:
84364-1-PBS
Host:
Rabbit
Isotype:
IgG
Purification Method:
Protein A purification

Clone ID:
241724A11
Reactivity:
human
GenBank:
BC011708

Conjugate:
Unconjugated
Full name:
insulin-like growth factor binding protein 6
Gene ID:
3489

Applications

Tested Applications:
Cytometric bead array, Sandwich ELISA

Range:
0.313-40 ng/mL (Cytometric Bead Array)
19.5-1250 pg/mL (Sandwich ELISA)

Recommended Dilutions:
It is recommended that this reagent should be titrated in each testing system to obtain optimal results.

Product Information

MP01229-1 targets IGFBP6 in immunoassays as a matched antibody pair. Validated in Cytometric bead array, Sandwich ELISA.

Capture antibody: IGFBP6 Recombinant antibody, PBS Only (Capture) 84364-2-PBS (241724C8). 100 µg. Concentration 1 mg/ml.

Detection antibody: IGFBP6 Recombinant antibody, PBS Only (Detector) 84364-1-PBS (241724A11). 100 µg. Concentration 1 mg/ml.

Alternative IGFBP6 matched antibody pairs: MP01229-2

Unconjugated rabbit recombinant monoclonal antibody pair in PBS only storage buffer at a concentration of 1 mg/mL, ready for conjugation. Created using Proteintech's proprietary in-house recombinant technology. Recombinant production enables unrivalled batch-to-batch consistency, easy scale-up, and future security of supply.

Matched antibody pairs are designed for use in a variety of assays and platforms that require matched antibody pairs.

Antibody use should be optimized for each application and assay.

Storage

Storage:
Store at -80°C.
Storage buffer:
PBS only

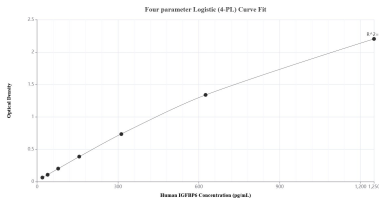
For technical support and original validation data for this product please contact:

T: 1 (888) 4PTGLAB (1-888-478-4522) (toll free in USA), or 1(312) 455-8498 (outside USA)

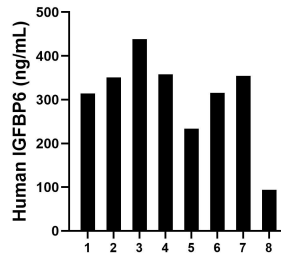
E: proteintech@ptglab.com
W: ptglab.com

This product is exclusively available under Proteintech Group brand and is not available to purchase from any other manufacturer.

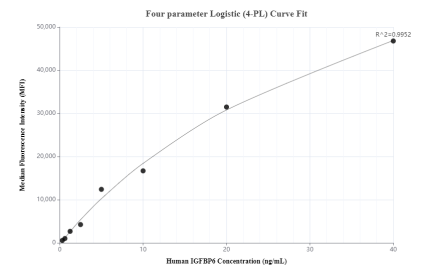
Selected Validation Data



Sandwich ELISA standard curve of MP01229-1, Human IGFBP6 Recombinant Matched Antibody Pair - PBS only. 84364-2-PBS was coated to a plate as the capture antibody and incubated with serial dilutions of standard Eg0087. 84364-1-PBS was HRP conjugated as the detection antibody. Range: 19.5-1250 pg/mL.



Serum of eight individual healthy human donors was measured. The IGFBP6 concentration of detected samples was determined to be 307.3 ng/mL with a range of 94.1-438.5 ng/mL.



Cytometric bead array standard curve of MP01229-1, IGFBP6 Recombinant Matched Antibody Pair, PBS Only. Capture antibody: 84364-2-PBS. Detection antibody: 84364-1-PBS. Standard: Eg0087. Range: 0.313-40 ng/mL.