

For Research Use Only

LIMK2 Recombinant Matched Antibody Pair, PBS Only



Catalog Number:MP01226-2

Capture Antibody Information

Catalog Number:

82977-2-PBS

Host:

Rabbit

Isotype:

IgG

Purification Method:

Protein A purification

Clone ID:

230283H8

Reactivity:

human

Immunogen Catalog Number:

Ag3011

Conjugate:

Unconjugated

Full name:

LIM domain kinase 2

Gene ID:

3985

Detection Antibody Information

Catalog Number:

82977-3-PBS

Host:

Rabbit

Isotype:

IgG

Purification Method:

Protein A purification

Clone ID:

230283E12

Reactivity:

human

GenBank:

BC013051

Immunogen Catalog Number:

Ag3011

Conjugate:

Unconjugated

Full name:

LIM domain kinase 2

Gene ID:

3985

Applications

Tested Applications:

Sandwich ELISA

Range:

0.39-25 ng/mL (Sandwich ELISA)

Recommended Dilutions:

It is recommended that this reagent should be titrated in each testing system to obtain optimal results.

Product Information

MP01226-2 targets LIMK2 in immunoassays as a matched antibody pair. Validated in Sandwich ELISA.

Capture antibody: LIMK2 Recombinant antibody, PBS Only (Capture) 82977-2-PBS (230283H8). 100 µg. Concentration 1 mg/mL.

Detection antibody: LIMK2 Recombinant antibody, PBS Only (Detector) 82977-3-PBS (230283E12). 100 µg. Concentration 1 mg/mL.

Unconjugated rabbit recombinant monoclonal antibody pair in PBS only storage buffer at a concentration of 1 mg/mL, ready for conjugation. Created using Proteintech's proprietary in-house recombinant technology. Recombinant production enables unrivalled batch-to-batch consistency, easy scale-up, and future security of supply.

Matched antibody pairs are designed for use in a variety of assays and platforms that require matched antibody pairs.

Antibody use should be optimized for each application and assay.

Storage

Storage:

Store at -80°C.

Storage buffer:

PBS only

For technical support and original validation data for this product please contact:

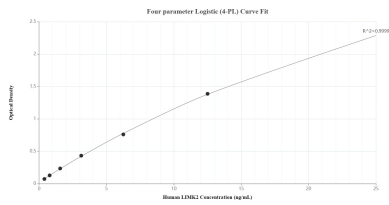
T: 1 (888) 4PTGLAB (1-888-478-4522) (toll free in USA), or 1(312) 455-8498 (outside USA)

E: proteintech@ptglab.com

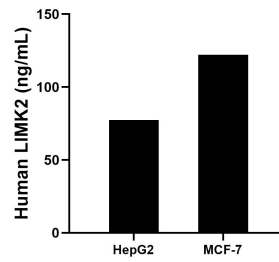
W: ptglab.com

This product is exclusively available under Proteintech Group brand and is not available to purchase from any other manufacturer.

Selected Validation Data



Sandwich ELISA standard curve of MP01226-2, Human LIMK2 Recombinant Matched Antibody Pair - PBS only. 82977-2-PBS was coated to a plate as the capture antibody and incubated with serial dilutions of standard Ag3011. 82977-3-PBS was HRP conjugated as the detection antibody. Range: 0.39-25 ng/mL



The mean LIMK2 concentration was determined to be 77.33 ng/mL in HepG2 cell extract based on a 1.20 mg/mL extract load and 122.10 ng/mL in MCF-7 cell extract based on a 1.20 mg/mL extract load.