

For Research Use Only



PAX6 Recombinant Matched Antibody Pair, PBS Only

Catalog Number:MP01219-4

Capture Antibody Information

Catalog Number:

84345-2-PBS

Host:

Rabbit

Isotype:

IgG

Purification Method:

Protein A purification

Clone ID:

241521C10

Reactivity:

human

Immunogen Catalog Number:

Ag2984

Conjugate:

Unconjugated

Full name:

paired box 6

Gene ID:

5080

Detection Antibody Information

Catalog Number:

84345-4-PBS

Host:

Rabbit

Isotype:

IgG

Purification Method:

Protein A purification

Clone ID:

241521H7

Reactivity:

human

GenBank:

BC011953

Immunogen Catalog Number:

Ag2984

Conjugate:

Unconjugated

Full name:

paired box 6

Gene ID:

5080

Applications

Tested Applications:

Sandwich ELISA

Range:

78.1-5000 pg/mL (Sandwich ELISA)

Recommended Dilutions:

It is recommended that this reagent should be titrated in each testing system to obtain optimal results.

Product Information

MP01219-4 targets PAX6 in immunoassays as a matched antibody pair. Validated in Sandwich ELISA.

Capture antibody: PAX6 Recombinant antibody, PBS Only (Capture) 84345-2-PBS (241521C10). 100 µg. Concentration 1 mg/ml.

Detection antibody: PAX6 Recombinant antibody, PBS Only (Capture/Detector) 84345-4-PBS (241521H7). 100 µg. Concentration 1 mg/ml.

Alternative PAX6 matched antibody pairs: MP01219-1, MP01219-2, MP01219-3

Unconjugated rabbit recombinant monoclonal antibody pair in PBS only storage buffer at a concentration of 1 mg/mL, ready for conjugation. Created using Proteintech's proprietary in-house recombinant technology.

Recombinant production enables unrivalled batch-to-batch consistency, easy scale-up, and future security of supply.

Matched antibody pairs are designed for use in a variety of assays and platforms that require matched antibody pairs.

Antibody use should be optimized for each application and assay.

Storage

Storage:

Store at -80°C.

Storage buffer:

PBS only

For technical support and original validation data for this product please contact:

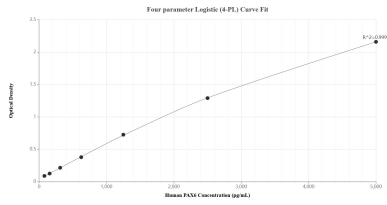
T: 1 (888) 4PTGLAB (1-888-478-4522) (toll free in USA), or 1(312) 455-8498 (outside USA)

E: proteintech@ptglab.com

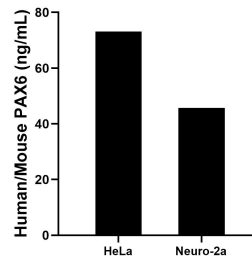
W: ptglab.com

This product is exclusively available under Proteintech Group brand and is not available to purchase from any other manufacturer.

Selected Validation Data



Sandwich ELISA standard curve of MP01219-4, Human PAX6 Recombinant Matched Antibody Pair - PBS only. 84345-2-PBS was coated to a plate as the capture antibody and incubated with serial dilutions of standard Ag2984. 84345-4-PBS was HRP conjugated as the detection antibody. Range: 78.1-5000 pg/mL.



The mean PAX6 concentration was determined to be 73.1 ng/mL in HeLa cell extract based on a 2.8 mg/mL extract load and 45.8 ng/mL in Neuro-2a cell extract based on a 2.3 mg/mL extract load.