

For Research Use Only

DNAJC15 Recombinant Matched Antibody Pair, PBS Only



Catalog Number:MP01217-2

Capture Antibody Information

Catalog Number:
84337-1-PBS
Host:
Rabbit
Isotype:
IgG
Purification Method:
Protein A purification

Clone ID:
241604C9
Reactivity:
human
Immunogen Catalog Number:
Ag8911

Conjugate:
Unconjugated
Full name:
DnaJ (Hsp40) homolog, subfamily C, member 15
Gene ID:
29103

Detection Antibody Information

Catalog Number:
84337-2-PBS
Host:
Rabbit
Isotype:
IgG
Purification Method:
Protein A purification

Clone ID:
241604D11
Reactivity:
human
GenBank:
BC010910
Immunogen Catalog Number:
Ag8911

Conjugate:
Unconjugated
Full name:
DnaJ (Hsp40) homolog, subfamily C, member 15
Gene ID:
29103

Applications

Tested Applications:
Sandwich ELISA

Range:
39.1-2500 pg/mL (Sandwich ELISA)

Recommended Dilutions:
It is recommended that this reagent should be titrated in each testing system to obtain optimal results.

Product Information

MP01217-2 targets DNAJC15 in immunoassays as a matched antibody pair. Validated in Sandwich ELISA.

Capture antibody: DNAJC15 Recombinant antibody, PBS Only (Capture/Detector) 84337-1-PBS (241604C9). 100 µg. Concentration 1 mg/ml.

Detection antibody: DNAJC15 Recombinant antibody, PBS Only (Capture/Detector) 84337-2-PBS (241604D11). 100 µg. Concentration 1 mg/ml.

Alternative DNAJC15 matched antibody pairs: MP01217-1, MP50019-1

Unconjugated rabbit recombinant monoclonal antibody pair in PBS only storage buffer at a concentration of 1 mg/mL, ready for conjugation. Created using Proteintech's proprietary in-house recombinant technology. Recombinant production enables unrivalled batch-to-batch consistency, easy scale-up, and future security of supply.

Matched antibody pairs are designed for use in a variety of assays and platforms that require matched antibody pairs.

Antibody use should be optimized for each application and assay.

Storage

Storage:
Store at -80°C.
Storage buffer:
PBS only

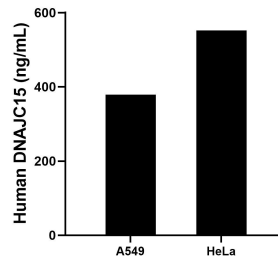
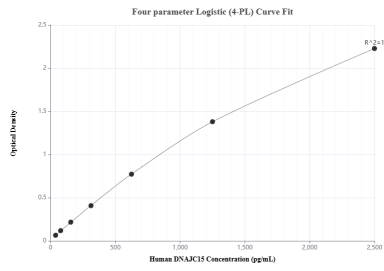
For technical support and original validation data for this product please contact:

T: 1 (888) 4PTGLAB (1-888-478-4522) (toll free in USA), or 1(312) 455-8498 (outside USA)

E: proteintech@ptglab.com
W: ptglab.com

This product is exclusively available under Proteintech Group brand and is not available to purchase from any other manufacturer.

Selected Validation Data



Sandwich ELISA standard curve of MP01217-2, Human DNAJC15 Recombinant Matched Antibody Pair - PBS only. 84337-1-PBS was coated to a plate as the capture antibody and incubated with serial dilutions of standard Ag8911. 84337-2-PBS was HRP conjugated as the detection antibody. Range: 39.1-2500 pg/mL

The mean DNAJC15 concentration was determined to be 551.62 ng/mL in HeLa cell extract based on a 2.8 mg/mL extract load and 378.97 ng/mL in A549 cell extract based on a 2.5 mg/mL extract load.