

For Research Use Only

Mouse IGFBP3 Recombinant Matched Antibody Pair, PBS Only



Catalog Number:MP01202-2

Capture Antibody Information

Catalog Number:
84288-1-PBS
Host:
Rabbit
Isotype:
IgG
Purification Method:
Protein A purification

Clone ID:
241619D3
Reactivity:
mouse

Conjugate:
Unconjugated
Full name:
insulin-like growth factor binding protein 3
Gene ID:
16009

Detection Antibody Information

Catalog Number:
84288-3-PBS
Host:
Rabbit
Isotype:
IgG
Purification Method:
Protein A purification

Clone ID:
241619D10
Reactivity:
mouse
GenBank:
NM_008343

Conjugate:
Unconjugated
Full name:
insulin-like growth factor binding protein 3
Gene ID:
16009

Applications

Tested Applications:
Cytometric bead array, Sandwich ELISA

Range:
0.625-80 ng/mL (Cytometric Bead Array)
0.156-10 ng/mL (Sandwich ELISA)

Recommended Dilutions:
It is recommended that this reagent should be titrated in each testing system to obtain optimal results.

Product Information

MP01202-2 targets IGFBP3 in immunoassays as a matched antibody pair. Validated in Cytometric bead array, Sandwich ELISA.

Capture antibody: Mouse IGFBP3 Recombinant antibody, PBS Only (Capture) 84288-1-PBS (241619D3). 100 µg. Concentration 1 mg/ml.

Detection antibody: Mouse IGFBP3 Recombinant antibody, PBS Only (Capture/Detector) 84288-3-PBS (241619D10). 100 µg. Concentration 1 mg/ml.

Alternative IGFBP3 matched antibody pairs: MP01202-1, MP01202-3, MP01352-1, MP01352-2, MP01352-3

Unconjugated rabbit recombinant monoclonal antibody pair in PBS only storage buffer at a concentration of 1 mg/mL, ready for conjugation. Created using Proteintech's proprietary in-house recombinant technology. Recombinant production enables unrivalled batch-to-batch consistency, easy scale-up, and future security of supply.

Matched antibody pairs are designed for use in a variety of assays and platforms that require matched antibody pairs.

Antibody use should be optimized for each application and assay.

Storage

Storage:
Store at -80°C.
Storage buffer:
PBS only

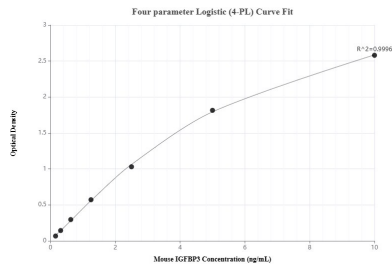
For technical support and original validation data for this product please contact:

T: 1 (888) 4PTGLAB (1-888-478-4522) (toll free in USA), or 1(312) 455-8498 (outside USA)

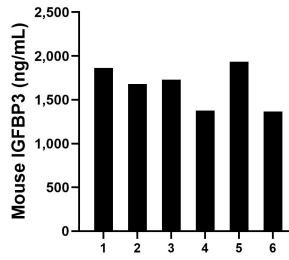
E: proteintech@ptglab.com
W: ptglab.com

This product is exclusively available under Proteintech Group brand and is not available to purchase from any other manufacturer.

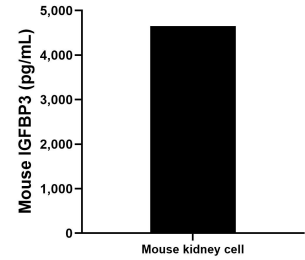
Selected Validation Data



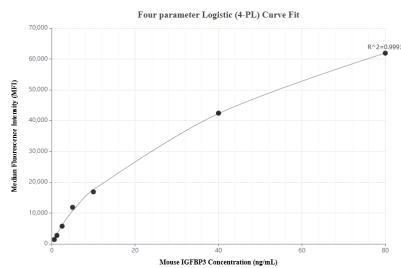
Sandwich ELISA standard curve of MP01202-2, Mouse IGFBP3 Recombinant Matched Antibody Pair - PBS only. 84288-1-PBS was coated to a plate as the capture antibody and incubated with serial dilutions of standard Eg0513. 84288-3-PBS was HRP conjugated as the detection antibody. Range: 0.156-10 ng/mL



Serum of six mice was measured. The mouse IGFBP3 concentration of detected samples was determined to be 1,658.02 ng/mL with a range of 1,364.6 - 1,933.3 ng/mL.



Mouse kidney tissue from one adult mouse (chopped in 1-2 mm pieces in 30 mL of medium) was cultured in RPMI supplemented with 10 % fetal calfserum and 50 μ M β -mercaptoethanol. Aliquots of the cell culture supernates were removed, assayed for levels of mouse IGFBP3, and measured 4,654.1 pg/mL.



Cytometric bead array standard curve of MP01202-2, MOUSE IGFBP3 Recombinant Matched Antibody Pair, PBS Only. Capture antibody: 84288-1-PBS. Detection antibody: 84288-3-PBS. Standard: Eg0513. Range: 0.625-80 ng/mL.