

For Research Use Only



THOP1 Recombinant Matched Antibody Pair, PBS Only

Catalog Number:MP01191-3

Capture Antibody Information

Catalog Number:
84319-2-PBS

Host:
Rabbit

Isotype:
IgG

Purification Method:
Protein A purification

Clone ID:
241607E8

Reactivity:
human

Immunogen Catalog Number:
Ag2268

Conjugate:
Unconjugated

Full name:
thimet oligopeptidase 1

Gene ID:
7064

Detection Antibody Information

Catalog Number:
84319-3-PBS

Host:
Rabbit

Isotype:
IgG

Purification Method:
Protein A purification

Clone ID:
241607G8

Reactivity:
human

GenBank:
BC000135

Immunogen Catalog Number:
Ag2268

Conjugate:
Unconjugated

Full name:
thimet oligopeptidase 1

Gene ID:
7064

Applications

Tested Applications:

Cytometric bead array, Sandwich ELISA

Range:

0.313-40 ng/mL (Cytometric Bead Array)
1.56-100 ng/mL (Sandwich ELISA)

Recommended Dilutions:

It is recommended that this reagent should be titrated in each testing system to obtain optimal results.

Product Information

MP01191-3 targets THOP1 in immunoassays as a matched antibody pair. Validated in Cytometric bead array, Sandwich ELISA.

Capture antibody: THOP1 Recombinant antibody, PBS Only (Capture) 84319-2-PBS (241607E8). 100 µg. Concentration 1 mg/ml.

Detection antibody: THOP1 Recombinant antibody, PBS Only (Detector) 84319-3-PBS (241607G8). 100 µg. Concentration 1 mg/ml.

Alternative THOP1 matched antibody pairs: MP01191-1, MP01191-2

Unconjugated rabbit recombinant monoclonal antibody pair in PBS only storage buffer at a concentration of 1 mg/mL, ready for conjugation. Created using Proteintech's proprietary in-house recombinant technology. Recombinant production enables unrivalled batch-to-batch consistency, easy scale-up, and future security of supply.

Matched antibody pairs are designed for use in a variety of assays and platforms that require matched antibody pairs.

Antibody use should be optimized for each application and assay.

Storage

Storage:

Store at -80°C.

Storage buffer:

PBS only

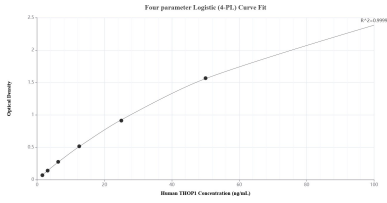
For technical support and original validation data for this product please contact:

T: 1 (888) 4PTGLAB (1-888-478-4522) (toll free in USA), or 1(312) 455-8498 (outside USA)

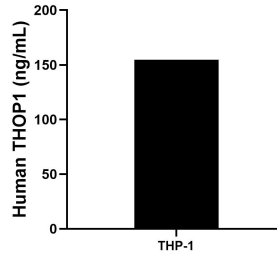
E: proteintech@ptglab.com
W: ptglab.com

This product is exclusively available under Proteintech Group brand and is not available to purchase from any other manufacturer.

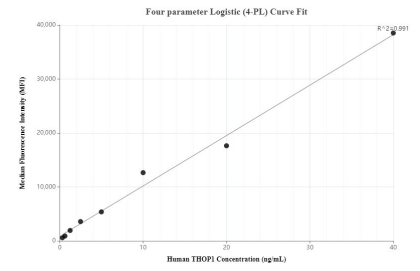
Selected Validation Data



Sandwich ELISA standard curve of MP01191-3, Human THOP1 Recombinant Matched Antibody Pair - PBS only. 84319-2-PBS was coated to a plate as the capture antibody and incubated with serial dilutions of standard Ag2268. 84319-3-PBS was HRP conjugated as the detection antibody. Range: 1.56-100 ng/mL



The mean THOP1 concentration was determined to be 154.80 ng/mL in THP-1 cell extract based on a 4.00 mg/mL extract load.



Cytometric bead array standard curve of MP01191-3, THOP1 Recombinant Matched Antibody Pair, PBS Only. Capture antibody: 84319-2-PBS. Detection antibody: 84319-3-PBS. Standard: Ag2268. Range: 0.313-40 ng/mL