

For Research Use Only

# SEL1L Recombinant Matched Antibody Pair, PBS Only



Catalog Number:MP01186-1

## Capture Antibody Information

**Catalog Number:**  
84317-5-PBS  
**Host:**  
Rabbit  
**Isotype:**  
IgG  
**Purification Method:**  
Protein A purification

**Clone ID:**  
241594H5  
**Reactivity:**  
human  
**Immunogen Catalog Number:**  
Ag32178

**Conjugate:**  
Unconjugated  
**Full name:**  
sel-1 suppressor of lin-12-like (C. elegans)  
**Gene ID:**  
6400

## Detection Antibody Information

**Catalog Number:**  
84317-2-PBS  
**Host:**  
Rabbit  
**Isotype:**  
IgG  
**Purification Method:**  
Protein A purification

**Clone ID:**  
241594C2  
**Reactivity:**  
human  
**GenBank:**  
NM\_005065  
**Immunogen Catalog Number:**  
Ag32178

**Conjugate:**  
Unconjugated  
**Full name:**  
sel-1 suppressor of lin-12-like (C. elegans)  
**Gene ID:**  
6400

## Applications

**Tested Applications:**  
Cytometric bead array, Sandwich ELISA

**Range:**  
0.625-80 ng/mL (Cytometric Bead Array)  
0.313-20 ng/mL (Sandwich ELISA)

**Recommended Dilutions:**  
It is recommended that this reagent should be titrated in each testing system to obtain optimal results.

## Product Information

MP01186-1 targets SEL1L in immunoassays as a matched antibody pair. Validated in Cytometric bead array, Sandwich ELISA.

Capture antibody: SEL1L Recombinant antibody, PBS Only (Capture) 84317-5-PBS (241594H5). 100 µg. Concentration 1 mg/mL.

Detection antibody: SEL1L Recombinant antibody, PBS Only (Detector) 84317-2-PBS (241594C2). 100 µg. Concentration 1 mg/mL.

Alternative SEL1L matched antibody pairs: MP01186-2, MP01186-3

Unconjugated rabbit recombinant monoclonal antibody pair in PBS only storage buffer at a concentration of 1 mg/mL, ready for conjugation. Created using Proteintech's proprietary in-house recombinant technology. Recombinant production enables unrivalled batch-to-batch consistency, easy scale-up, and future security of supply.

Matched antibody pairs are designed for use in a variety of assays and platforms that require matched antibody pairs.

Antibody use should be optimized for each application and assay.

## Storage

**Storage:**  
Store at -80°C.  
**Storage buffer:**  
PBS only

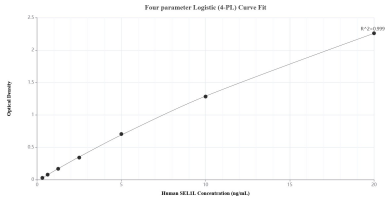
For technical support and original validation data for this product please contact:

T: 1 (888) 4PTGLAB (1-888-478-4522) (toll free in USA), or 1(312) 455-8498 (outside USA)

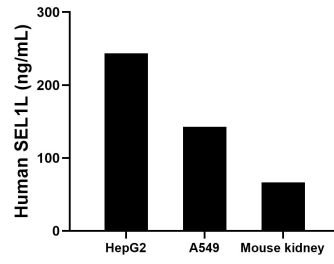
E: [proteintech@ptglab.com](mailto:proteintech@ptglab.com)  
W: [ptglab.com](http://ptglab.com)

This product is exclusively available under Proteintech Group brand and is not available to purchase from any other manufacturer.

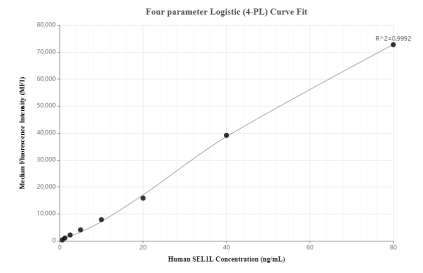
## Selected Validation Data



Sandwich ELISA standard curve of MP01186-1, Human SEL1L Recombinant Matched Antibody Pair - PBS only. 84317-5-PBS was coated to a plate as the capture antibody and incubated with serial dilutions of standard Ag32178. 84317-2-PBS was HRP conjugated as the detection antibody. Range: 0.313-20 ng/mL



The mean SEL1L concentration was determined to be 243.66 ng/mL in HepG2 cell extract based on a 2.30 mg/mL extract load, 142.85 ng/mL in A549 cell extract based on a 2.70 mg/mL extract load and 66.47 ng/mL in mouse kidney cell extract based on a 3.10 mg/mL extract load.



Cytometric bead array standard curve of MP01186-1, SEL1L Recombinant Matched Antibody Pair, PBS Only. Capture antibody: 84317-5-PBS. Detection antibody: 84317-2-PBS. Standard: Ag32178. Range: 0.625-80 ng/mL