

For Research Use Only

# IL-1R2 Recombinant Matched Antibody Pair, PBS Only



Catalog Number:MP01178-4

## Capture Antibody Information

Catalog Number:  
84269-1-PBS

Host:  
Rabbit

Isotype:  
IgG

Purification Method:  
Protein A purification

Clone ID:  
241530B4

Reactivity:  
human

Conjugate:  
Unconjugated

Full name:  
interleukin 1 receptor, type II

Gene ID:  
7850

## Detection Antibody Information

Catalog Number:  
84269-4-PBS

Host:  
Rabbit

Isotype:  
IgG

Purification Method:  
Protein A purification

Clone ID:  
241530A4

Reactivity:  
human

GenBank:  
BC039031

Conjugate:  
Unconjugated

Full name:  
interleukin 1 receptor, type II

Gene ID:  
7850

## Applications

Tested Applications:  
Sandwich ELISA

Range:  
39.1-2500 pg/mL (Sandwich ELISA)

Recommended Dilutions:  
It is recommended that this reagent should be titrated in each testing system to obtain optimal results.

## Product Information

MP01178-4 targets IL-1R2 in immunoassays as a matched antibody pair. Validated in Sandwich ELISA.

Capture antibody: IL-1R2 Recombinant antibody, PBS Only (Capture/Detector) 84269-1-PBS (241530B4). 100 µg. Concentration 1 mg/ml.

Detection antibody: IL-1R2 Recombinant antibody, PBS Only (Capture/Detector) 84269-4-PBS (241530A4). 100 µg. Concentration 1 mg/ml.

Alternative IL-1R2 matched antibody pairs: MP01178-1, MP01178-2, MP01178-3

Unconjugated rabbit recombinant monoclonal antibody pair in PBS only storage buffer at a concentration of 1 mg/mL, ready for conjugation. Created using Proteintech's proprietary in-house recombinant technology. Recombinant production enables unrivalled batch-to-batch consistency, easy scale-up, and future security of supply.

Matched antibody pairs are designed for use in a variety of assays and platforms that require matched antibody pairs.

Antibody use should be optimized for each application and assay.

## Storage

Storage:  
Store at -80°C.  
Storage buffer:  
PBS only

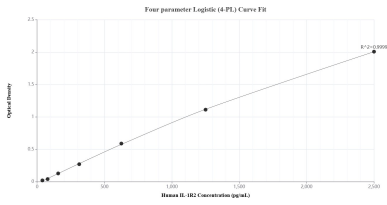
For technical support and original validation data for this product please contact:

T: 1 (888) 4PTGLAB (1-888-478-4522) (toll free in USA), or 1(312) 455-8498 (outside USA)

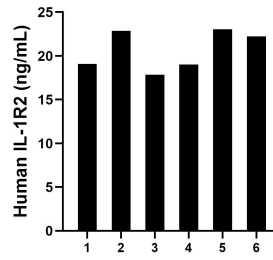
E: [proteintech@ptglab.com](mailto:proteintech@ptglab.com)  
W: [ptglab.com](http://ptglab.com)

**This product is exclusively available under Proteintech Group brand and is not available to purchase from any other manufacturer.**

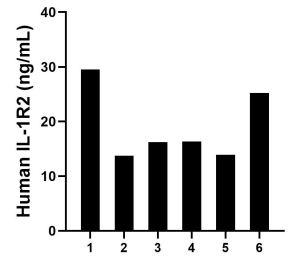
## Selected Validation Data



Sandwich ELISA standard curve of MP01178-4, Human IL-1R2 Recombinant Matched Antibody Pair - PBS only. 84269-1-PBS was coated to a plate as the capture antibody and incubated with serial dilutions of standard EgO118. 84269-4-PBS was HRP conjugated as the detection antibody. Range: 39.1-2500 pg/mL



Serum of six individual healthy human donors was measured. The IL-1R2 concentration of detected samples was determined to be 20.7 ng/mL with a range of 17.9-23.0 ng/mL.



Plasma of six individual healthy human donors was measured. The IL-1R2 concentration of detected samples was determined to be 19.2 ng/mL with a range of 13.8-29.5 ng/mL.