

For Research Use Only

CD72 Recombinant Matched Antibody Pair, PBS Only



Catalog Number:MP01170-2

Capture Antibody Information

Catalog Number:
84270-4-PBS

Host:
Rabbit

Isotype:
IgG

Purification Method:
Protein A purification

Clone ID:
241300G3

Reactivity:
human

Conjugate:
Unconjugated

Full name:
CD72 molecule

Gene ID:
971

Detection Antibody Information

Catalog Number:
84270-1-PBS

Host:
Rabbit

Isotype:
IgG

Purification Method:
Protein A purification

Clone ID:
241300A6

Reactivity:
human

GenBank:
BC030227

Conjugate:
Unconjugated

Full name:
CD72 molecule

Gene ID:
971

Applications

Tested Applications:
Cytometric bead array, Sandwich ELISA

Range:
0.313-40 ng/mL (Cytometric Bead Array)
19.5-1250 pg/mL (Sandwich ELISA)

Recommended Dilutions:
It is recommended that this reagent should be titrated in each testing system to obtain optimal results.

Product Information

MP01170-2 targets CD72 in immunoassays as a matched antibody pair. Validated in Cytometric bead array, Sandwich ELISA.

Capture antibody: CD72 Recombinant antibody, PBS Only (Capture/Detector) 84270-4-PBS (241300G3). 100 µg. Concentration 1 mg/ml.

Detection antibody: CD72 Recombinant antibody, PBS Only (Detector) 84270-1-PBS (241300A6). 100 µg. Concentration 1 mg/ml.

Alternative CD72 matched antibody pairs: MP01170-1, MP01170-3

Unconjugated rabbit recombinant monoclonal antibody pair in PBS only storage buffer at a concentration of 1 mg/mL, ready for conjugation. Created using Proteintech's proprietary in-house recombinant technology. Recombinant production enables unrivalled batch-to-batch consistency, easy scale-up, and future security of supply.

Matched antibody pairs are designed for use in a variety of assays and platforms that require matched antibody pairs.

Antibody use should be optimized for each application and assay.

Storage

Storage:
Store at -80°C.
Storage buffer:
PBS only

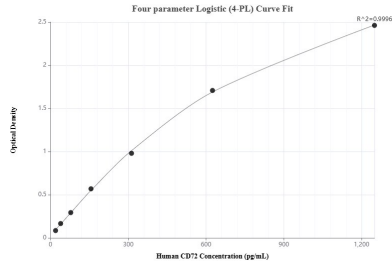
For technical support and original validation data for this product please contact:

T: 1 (888) 4PTGLAB (1-888-478-4522) (toll free in USA), or 1(312) 455-8498 (outside USA)

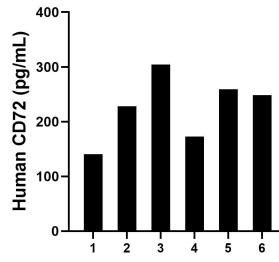
E: proteintech@ptglab.com
W: ptglab.com

This product is exclusively available under Proteintech Group brand and is not available to purchase from any other manufacturer.

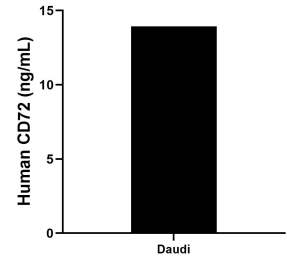
Selected Validation Data



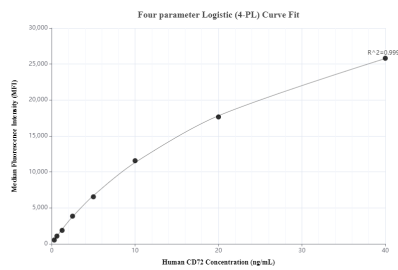
Sandwich ELISA standard curve of MP01170-2, Human CD72 Recombinant Matched Antibody Pair - PBS only. 84270-4-PBS was coated to a plate as the capture antibody and incubated with serial dilutions of standard RP02318. 84270-1-PBS was HRP conjugated as the detection antibody. Range: 19.5-1250 pg/mL



Serum of six individual healthy human donors was measured. The human CD72 concentration of detected samples was determined to be 225.64 pg/mL with a range of 140.7 - 304.5 pg/mL



The mean CD72 concentration was determined to be 13.98 ng/mL in Daudi cell extract based on a 1.8 mg/mL extract load.



Cytometric bead array standard curve of MP01170-2, CD72 Recombinant Matched Antibody Pair, PBS Only. Capture antibody: 84270-4-PBS. Detection antibody: 84270-1-PBS. Standard: RP02318. Range: 0.313-40 ng/mL