

For Research Use Only

ADAM17 Recombinant Matched Antibody Pair, PBS Only



Catalog Number:MP01169-3

Capture Antibody Information

Catalog Number:

84292-3-PBS

Host:

Rabbit

Isotype:

IgG

Purification Method:

Protein A purification

Clone ID:

241305E9

Reactivity:

human

Immunogen Catalog Number:

Ag32418

Conjugate:

Unconjugated

Full name:

ADAM metallopeptidase domain 17

Gene ID:

6868

Detection Antibody Information

Catalog Number:

84292-4-PBS

Host:

Rabbit

Isotype:

IgG

Purification Method:

Protein A purification

Clone ID:

241305A2

Reactivity:

human, mouse

GenBank:

BC136783

Immunogen Catalog Number:

Ag32418

Conjugate:

Unconjugated

Full name:

ADAM metallopeptidase domain 17

Gene ID:

6868

Applications

Tested Applications:

Sandwich ELISA

Range:

78.1-5000 pg/mL (Sandwich ELISA)

Recommended Dilutions:

It is recommended that this reagent should be titrated in each testing system to obtain optimal results.

Product Information

MP01169-3 targets ADAM17 in immunoassays as a matched antibody pair. Validated in Sandwich ELISA.

Capture antibody: ADAM17 Recombinant antibody, PBS Only (Capture) 84292-3-PBS (241305E9). 100 µg. Concentration 1 mg/ml.

Detection antibody: ADAM17 Recombinant antibody, PBS Only (Detector) 84292-4-PBS (241305A2). 100 µg. Concentration 1 mg/ml.

Unconjugated rabbit recombinant monoclonal antibody pair in PBS only storage buffer at a concentration of 1 mg/mL, ready for conjugation. Created using Proteintech's proprietary in-house recombinant technology. Recombinant production enables unrivalled batch-to-batch consistency, easy scale-up, and future security of supply.

Matched antibody pairs are designed for use in a variety of assays and platforms that require matched antibody pairs.

Antibody use should be optimized for each application and assay.

Storage

Storage:

Store at -80°C.

Storage buffer:

PBS only

For technical support and original validation data for this product please contact:

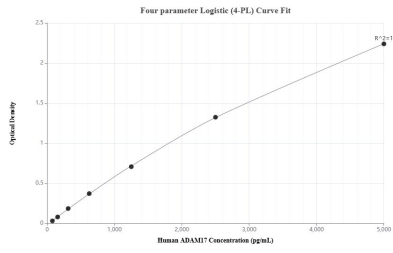
T: 1 (888) 4PTGLAB (1-888-478-4522) (toll free in USA), or 1(312) 455-8498 (outside USA)

E: proteintech@ptglab.com

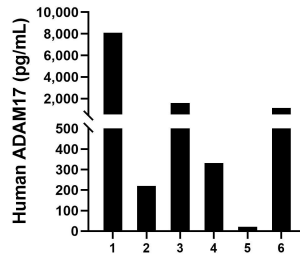
W: ptglab.com

This product is exclusively available under Proteintech Group brand and is not available to purchase from any other manufacturer.

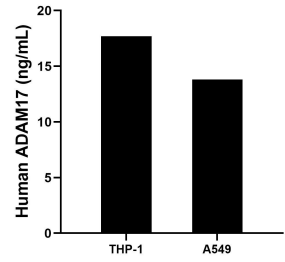
Selected Validation Data



Sandwich ELISA standard curve of MP01169-3, Human ADAM17 Recombinant Matched Antibody Pair - PBS only. 84292-3-PBS was coated to a plate as the capture antibody and incubated with serial dilutions of standard Ag32418. 84292-4-PBS was HRP conjugated as the detection antibody. Range: 78.1-5000 pg/mL



Serum of six individual healthy human donors was measured. The human ADAM17 concentration of detected samples was determined to be 1,898.9 pg/mL with a range of 21.5 - 8,096.2 ng/mL



The mean ADAM17 concentration was determined to be 18.51 ng/mL in THP-1 cell extract based on a 4.4 mg/mL extract load and 13.76 ng/mL in A549 cell extract based on a 2.7 mg/mL extract load.