

For Research Use Only

BTLA/CD272 Recombinant Matched Antibody Pair, PBS Only



Catalog Number:MP01168-4

Capture Antibody Information

Catalog Number:
84262-5-PBS

Host:
Rabbit

Isotype:
IgG

Purification Method:
Protein A purification

Clone ID:
241319B1

Reactivity:
human

Conjugate:
Unconjugated

Full name:
B and T lymphocyte associated

Gene ID:
151888

Detection Antibody Information

Catalog Number:
84262-6-PBS

Host:
Rabbit

Isotype:
IgG

Purification Method:
Protein A purification

Clone ID:
241319C11

Reactivity:
human

GenBank:
BC107091

Conjugate:
Unconjugated

Full name:
B and T lymphocyte associated

Gene ID:
151888

Applications

Tested Applications:
Sandwich ELISA

Range:
4.88-313 pg/mL (Sandwich ELISA)

Recommended Dilutions:
It is recommended that this reagent should be titrated in each testing system to obtain optimal results.

Product Information

MP01168-4 targets BTLA/CD272 in immunoassays as a matched antibody pair. Validated in Sandwich ELISA.

Capture antibody: BTLA/CD272 Recombinant antibody, PBS Only (Capture) 84262-5-PBS (241319B1). 100 µg. Concentration 1 mg/ml.

Detection antibody: BTLA Recombinant antibody, PBS Only (Detector) 84262-6-PBS (241319C11). 100 µg. Concentration 1 mg/ml.

Alternative BTLA/CD272 matched antibody pairs: MP01168-1, MP01168-2, MP01168-3

Unconjugated rabbit recombinant monoclonal antibody pair in PBS only storage buffer at a concentration of 1 mg/mL, ready for conjugation. Created using Proteintech's proprietary in-house recombinant technology. Recombinant production enables unrivalled batch-to-batch consistency, easy scale-up, and future security of supply.

Matched antibody pairs are designed for use in a variety of assays and platforms that require matched antibody pairs.

Antibody use should be optimized for each application and assay.

Storage

Storage:
Store at -80°C.
Storage buffer:
PBS only

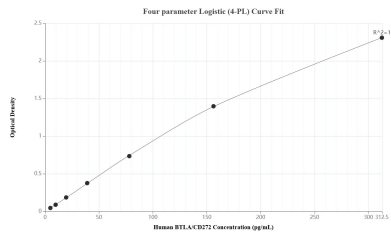
For technical support and original validation data for this product please contact:

T: 1 (888) 4PTGLAB (1-888-478-4522) (toll free in USA), or 1(312) 455-8498 (outside USA)

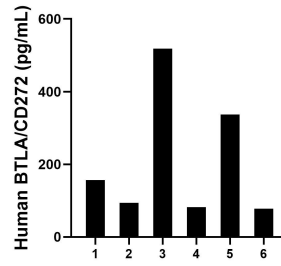
E: proteintech@ptglab.com
W: ptglab.com

This product is exclusively available under Proteintech Group brand and is not available to purchase from any other manufacturer.

Selected Validation Data



Sandwich ELISA standard curve of MP01168-4, Human BTLA/CD272 Recombinant Matched Antibody Pair - PBS only. 84262-5-PBS was coated to a plate as the capture antibody and incubated with serial dilutions of standard RP02326. 84262-6-PBS was HRP conjugated as the detection antibody. Range: 4.88-313 pg/mL



Serum of six individual healthy human donors was measured. The BTLA/CD272 concentration of detected samples was determined to be 211.0 ng/mL with a range of 78.0-518.0 ng/mL