

For Research Use Only

MAGEA4 Recombinant Matched Antibody Pair, PBS Only



Catalog Number:MP01144-3

Capture Antibody Information

Catalog Number:
84248-3-PBS

Host:
Rabbit

Isotype:
IgG

Purification Method:
Protein A purification

Clone ID:
241558F8

Reactivity:
human

Immunogen Catalog Number:
Ag3193

Conjugate:
Unconjugated

Full name:
melanoma antigen family A, 4

Gene ID:
4103

Detection Antibody Information

Catalog Number:
84248-1-PBS

Host:
Rabbit

Isotype:
IgG

Purification Method:
Protein A purification

Clone ID:
241558A1

Reactivity:
human

GenBank:
BC017723

Immunogen Catalog Number:
Ag3193

Conjugate:
Unconjugated

Full name:
melanoma antigen family A, 4

Gene ID:
4103

Applications

Tested Applications:
Cytometric bead array, Sandwich ELISA

Range:
0.313-40 ng/mL (Cytometric Bead Array)
0.156-10 ng/mL (Sandwich ELISA)

Recommended Dilutions:
It is recommended that this reagent should be titrated in each testing system to obtain optimal results.

Product Information

MP01144-3 targets MAGEA4 in immunoassays as a matched antibody pair. Validated in Cytometric bead array, Sandwich ELISA.

Capture antibody: MAGEA4 Recombinant antibody, PBS Only (Capture) 84248-3-PBS (241558F8). 100 µg. Concentration 1 mg/ml.

Detection antibody: MAGEA4 Recombinant antibody, PBS Only (Detector) 84248-1-PBS (241558A1). 100 µg. Concentration 1 mg/ml.

Alternative MAGEA4 matched antibody pairs: MP01144-1, MP01144-2

Unconjugated rabbit recombinant monoclonal antibody pair in PBS only storage buffer at a concentration of 1 mg/mL, ready for conjugation. Created using Proteintech's proprietary in-house recombinant technology. Recombinant production enables unrivalled batch-to-batch consistency, easy scale-up, and future security of supply.

Matched antibody pairs are designed for use in a variety of assays and platforms that require matched antibody pairs.

Antibody use should be optimized for each application and assay.

Storage

Storage:
Store at -80°C.
Storage buffer:
PBS only

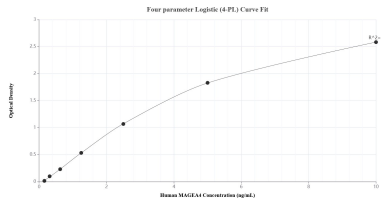
For technical support and original validation data for this product please contact:

T: 1 (888) 4PTGLAB (1-888-478-4522) (toll free in USA), or 1(312) 455-8498 (outside USA)

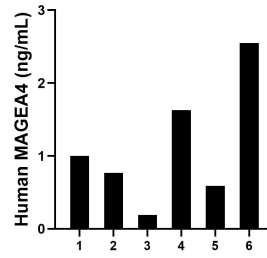
E: proteintech@ptglab.com
W: ptglab.com

This product is exclusively available under Proteintech Group brand and is not available to purchase from any other manufacturer.

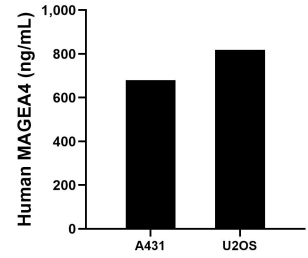
Selected Validation Data



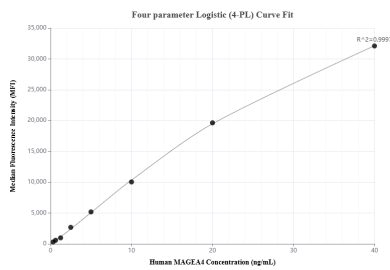
Sandwich ELISA standard curve of MP01144-3, Human MAGEA4 Recombinant Matched Antibody Pair - PBS only. 84248-3-PBS was coated to a plate as the capture antibody and incubated with serial dilutions of standard Ag3193. 84248-1-PBS was HRP conjugated as the detection antibody. Range: 0.156-10 ng/mL



Serum of six individual healthy human donors was measured. The MAGEA4 concentration of detected samples was determined to be 1.12 ng/mL with a range of 0.19-2.55 ng/mL.



The mean MAGEA4 concentration was determined to be 680.30 ng/mL in A431 cell extract based on a 2.60 mg/mL extract load and 818.54 ng/mL in U2OS cell extract based on a 3.50 mg/mL extract load.



Cytometric bead array standard curve of MP01144-3, MAGEA4 Recombinant Matched Antibody Pair, PBS Only. Capture antibody: 84248-3-PBS. Detection antibody: 84248-1-PBS. Standard: Ag3193. Range: 0.313-40 ng/mL