

For Research Use Only

P16-INK4A Recombinant Matched Antibody Pair, PBS Only



Catalog Number:MP01135-4

Capture Antibody Information

Catalog Number:

81373-6-PBS

Host:

Rabbit

Isotype:

IgG

Purification Method:

Protein A purification

Clone ID:

241438G3

Reactivity:

human

Immunogen Catalog Number:

Ag1328

Conjugate:

Unconjugated

Full name:

cyclin-dependent kinase inhibitor 2A (melanoma, p16, inhibits CDK4)

Gene ID:

1029

Detection Antibody Information

Catalog Number:

81373-4-PBS

Host:

Rabbit

Isotype:

IgG

Purification Method:

Protein A purification

Clone ID:

241438D6

Reactivity:

human

GenBank:

BC021998

Immunogen Catalog Number:

Ag1328

Conjugate:

Unconjugated

Full name:

cyclin-dependent kinase inhibitor 2A (melanoma, p16, inhibits CDK4)

Gene ID:

1029

Applications

Tested Applications:

Sandwich ELISA

Range:

0.195-12.5 ng/mL (Sandwich ELISA)

Recommended Dilutions:

It is recommended that this reagent should be titrated in each testing system to obtain optimal results.

Product Information

MP01135-4 targets P16-INK4A in immunoassays as a matched antibody pair. Validated in Sandwich ELISA.

Capture antibody: P16-INK4A Recombinant antibody, PBS Only (Capture) 81373-6-PBS (241438G3). 100 µg. Concentration 1 mg/ml.

Detection antibody: P16-INK4A Recombinant antibody, PBS Only (Detector) 81373-4-PBS (241438D6). 100 µg. Concentration 1 mg/ml.

Alternative P16-INK4A matched antibody pairs: MP01135-1, MP01135-2, MP01135-3

Unconjugated rabbit recombinant monoclonal antibody pair in PBS only storage buffer at a concentration of 1 mg/mL, ready for conjugation. Created using Proteintech's proprietary in-house recombinant technology.

Recombinant production enables unrivalled batch-to-batch consistency, easy scale-up, and future security of supply.

Matched antibody pairs are designed for use in a variety of assays and platforms that require matched antibody pairs.

Antibody use should be optimized for each application and assay.

Storage

Storage:

Store at -80°C.

Storage buffer:

PBS only

For technical support and original validation data for this product please contact:

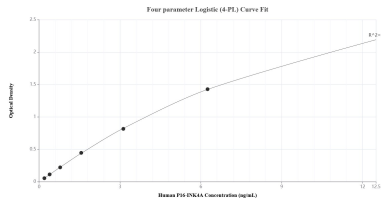
T: 1 (888) 4PTGLAB (1-888-478-4522) (toll free in USA), or 1(312) 455-8498 (outside USA)

E: proteintech@ptglab.com

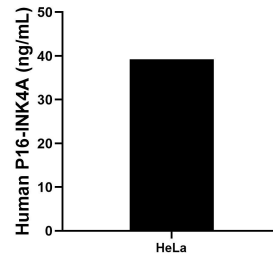
W: ptglab.com

This product is exclusively available under Proteintech Group brand and is not available to purchase from any other manufacturer.

Selected Validation Data



Sandwich ELISA standard curve of MP01135-4, Human P16-INK4A Recombinant Matched Antibody Pair - PBS only. 81373-6-PBS was coated to a plate as the capture antibody and incubated with serial dilutions of standard Ag1328. 81373-4-PBS was HRP conjugated as the detection antibody. Range: 0.195-12.5 ng/mL.



The mean P16-INK4A concentration was determined to be 39.21 ng/mL in HeLa cell extract based on a 2.80 mg/mL extract load.