

For Research Use Only

# Mouse CD23 Recombinant Matched Antibody Pair, PBS Only



Catalog Number:MP01134-2

## Capture Antibody Information

**Catalog Number:**  
84212-4-PBS  
**Host:**  
Rabbit  
**Isotype:**  
IgG  
**Purification Method:**  
Protein A purification

**Clone ID:**  
241385A5  
**Reactivity:**  
mouse

**Conjugate:**  
Unconjugated  
**Full name:**  
Fc receptor, IgE, low affinity II, alpha polypeptide  
**Gene ID:**  
14128

## Detection Antibody Information

**Catalog Number:**  
84212-3-PBS  
**Host:**  
Rabbit  
**Isotype:**  
IgG  
**Purification Method:**  
Protein A purification

**Clone ID:**  
241385C9  
**Reactivity:**  
mouse  
**GenBank:**  
EDL21948.1

**Conjugate:**  
Unconjugated  
**Full name:**  
Fc receptor, IgE, low affinity II, alpha polypeptide  
**Gene ID:**  
14128

## Applications

**Tested Applications:**  
Sandwich ELISA

**Range:**  
0.313-20 ng/mL (Sandwich ELISA)

**Recommended Dilutions:**  
It is recommended that this reagent should be titrated in each testing system to obtain optimal results.

## Product Information

MP01134-2 targets CD23 in immunoassays as a matched antibody pair. Validated in Sandwich ELISA.

Capture antibody: Mouse CD23/Fc epsilon RII Recombinant antibody, PBS Only (Capture) 84212-4-PBS (241385A5). 100 µg. Concentration 1 mg/ml.

Detection antibody: Mouse CD23/Fc epsilon RII Recombinant antibody, PBS Only (Detector) 84212-3-PBS (241385C9). 100 µg. Concentration 1 mg/ml.

Alternative CD23 matched antibody pairs: MP00958-1, MP00958-2, MP00958-3

Unconjugated rabbit recombinant monoclonal antibody pair in PBS only storage buffer at a concentration of 1 mg/mL, ready for conjugation. Created using Proteintech's proprietary in-house recombinant technology. Recombinant production enables unrivalled batch-to-batch consistency, easy scale-up, and future security of supply.

Matched antibody pairs are designed for use in a variety of assays and platforms that require matched antibody pairs.

Antibody use should be optimized for each application and assay.

## Storage

**Storage:**  
Store at -80°C.  
**Storage buffer:**  
PBS only

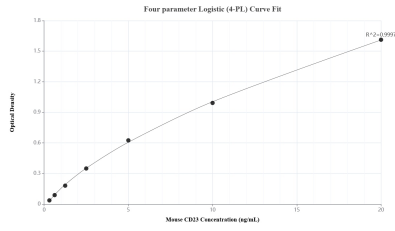
For technical support and original validation data for this product please contact:

T: 1 (888) 4PTGLAB (1-888-478-4522) (toll free in USA), or 1(312) 455-8498 (outside USA)

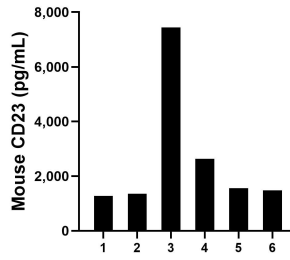
E: [proteintech@ptglab.com](mailto:proteintech@ptglab.com)  
W: [ptglab.com](http://ptglab.com)

**This product is exclusively available under Proteintech Group brand and is not available to purchase from any other manufacturer.**

## Selected Validation Data



Sandwich ELISA standard curve of MP01134-2, Mouse CD23 Recombinant Matched Antibody Pair - PBS only. 84212-4-PBS was coated to a plate as the capture antibody and incubated with serial dilutions of standard Eg1295. 84212-3-PBS was HRP conjugated as the detection antibody. Range: 0.313-20 ng/mL.



Serum of six mouse was measured. The CD23 concentration of detected samples was determined to be 2624.00 pg/mL with a range of 1279.00 - 7445.00 pg/mL.