

FGFR2 Recombinant Matched Antibody Pair, PBS Only

Catalog Number: MP01128-2

Capture Antibody Information

Catalog Number:
84205-1-PBS
Host:
Rabbit
Isotype:
IgG
Purification Method:
Protein A purification

Clone ID:
241383A5
Reactivity:
human

Conjugate:
Unconjugated
Full name:
fibroblast growth factor receptor 2
Gene ID:
2263

Detection Antibody Information

Catalog Number:
84205-2-PBS
Host:
Rabbit
Isotype:
IgG
Purification Method:
Protein A purification

Clone ID:
241383B5
Reactivity:
human
GenBank:
NM_000141.4

Conjugate:
Unconjugated
Full name:
fibroblast growth factor receptor 2
Gene ID:
2263

Applications

Tested Applications:
Cytometric bead array, Sandwich ELISA

Range:
0.625-80 ng/mL (Cytometric Bead Array)
0.313-20 ng/mL (Sandwich ELISA)

Recommended Dilutions:
It is recommended that this reagent should be titrated in each testing system to obtain optimal results.

Product Information

MP01128-2 targets FGFR2 in immunoassays as a matched antibody pair. Validated in Cytometric bead array, Sandwich ELISA.

Capture antibody: FGFR2 Recombinant antibody, PBS Only (Capture) 84205-1-PBS (241383A5). 100 µg. Concentration 1 mg/ml.

Detection antibody: FGFR2 Recombinant antibody, PBS Only (Capture/Detector) 84205-2-PBS (241383B5). 100 µg. Concentration 1 mg/ml.

Alternative FGFR2 matched antibody pairs: MP01128-1, MP01128-3, MP50495-1, MP50495-2, MP50495-3

Unconjugated rabbit recombinant monoclonal antibody pair in PBS only storage buffer at a concentration of 1 mg/mL, ready for conjugation. Created using Proteintech's proprietary in-house recombinant technology. Recombinant production enables unrivalled batch-to-batch consistency, easy scale-up, and future security of supply.

Matched antibody pairs are designed for use in a variety of assays and platforms that require matched antibody pairs.

Antibody use should be optimized for each application and assay.

Storage

Storage:
Store at -80°C.
Storage buffer:
PBS only

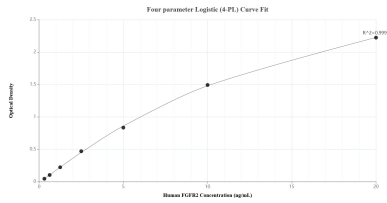
For technical support and original validation data for this product please contact:

T: 1 (888) 4PTGLAB (1-888-478-4522) (toll free in USA), or 1(312) 455-8498 (outside USA)

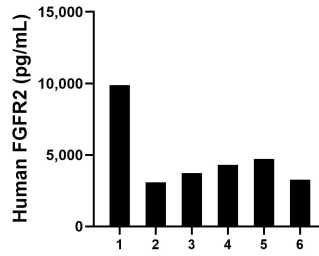
E: proteintech@ptglab.com
W: ptglab.com

This product is exclusively available under Proteintech Group brand and is not available to purchase from any other manufacturer.

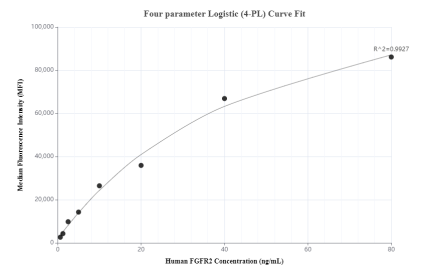
Selected Validation Data



Sandwich ELISA standard curve of MP01128-2, Human FGFR2 Recombinant Matched Antibody Pair - PBS only. 84205-1-PBS was coated to a plate as the capture antibody and incubated with serial dilutions of standard Eg1265. 84205-2-PBS was HRP conjugated as the detection antibody. Range: 0.313-20 ng/mL



Serum of six individual healthy human donors was measured. The FGFR2 concentration of detected samples was determined to be 4,832.03 pg/mL with a range of 3,076.26-9,887.31 pg/mL.



Cytometric bead array standard curve of MP01128-2, FGFR2 Recombinant Matched Antibody Pair, PBS Only. Capture antibody: 84205-1-PBS. Detection antibody: 84205-2-PBS. Standard: Eg1265. Range: 0.625-80 ng/mL