

For Research Use Only

CD122/IL-2RB Recombinant Matched Antibody Pair, PBS Only



Catalog Number:MP01123-3

Capture Antibody Information

Catalog Number:
84229-4-PBS

Host:
Rabbit

Isotype:
IgG

Purification Method:
Protein A purification

Clone ID:
241408G10

Reactivity:
human

Immunogen Catalog Number:
Ag3929

Conjugate:
Unconjugated

Full name:
interleukin 2 receptor, beta

Gene ID:
3560

Detection Antibody Information

Catalog Number:
84229-1-PBS

Host:
Rabbit

Isotype:
IgG

Purification Method:
Protein A purification

Clone ID:
241408A9

Reactivity:
human

GenBank:
BC025691

Immunogen Catalog Number:
Ag3929

Conjugate:
Unconjugated

Full name:
interleukin 2 receptor, beta

Gene ID:
3560

Applications

Tested Applications:
Sandwich ELISA

Range:
39.1-2500 pg/mL (Sandwich ELISA)

Recommended Dilutions:
It is recommended that this reagent should be titrated in each testing system to obtain optimal results.

Product Information

MP01123-3 targets CD122/IL-2RB in immunoassays as a matched antibody pair. Validated in Sandwich ELISA.

Capture antibody: IL2RB Recombinant antibody, PBS Only (Capture) 84229-4-PBS (241408G10). 100 µg. Concentration 1 mg/ml.

Detection antibody: CD122/IL-2RB Recombinant antibody, PBS Only (Detector) 84229-1-PBS (241408A9). 100 µg. Concentration 1 mg/ml.

Alternative CD122/IL-2RB matched antibody pairs: MP01123-1, MP01123-2, MP50451-1, MP50451-2, MP50451-3

Unconjugated rabbit recombinant monoclonal antibody pair in PBS only storage buffer at a concentration of 1 mg/mL, ready for conjugation. Created using Proteintech's proprietary in-house recombinant technology. Recombinant production enables unrivalled batch-to-batch consistency, easy scale-up, and future security of supply.

Matched antibody pairs are designed for use in a variety of assays and platforms that require matched antibody pairs.

Antibody use should be optimized for each application and assay.

Storage

Storage:
Store at -80°C.
Storage buffer:
PBS only

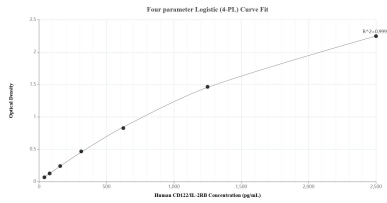
For technical support and original validation data for this product please contact:

T: 1 (888) 4PTGLAB (1-888-478-4522) (toll free in USA), or 1(312) 455-8498 (outside USA)

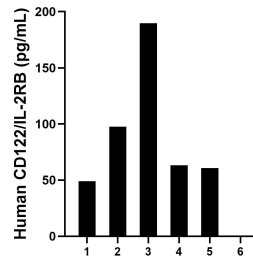
E: proteintech@ptglab.com
W: ptglab.com

This product is exclusively available under Proteintech Group brand and is not available to purchase from any other manufacturer.

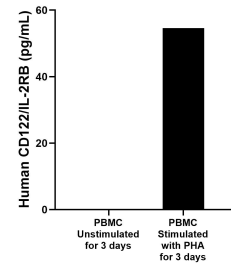
Selected Validation Data



Sandwich ELISA standard curve of MP01123-3, Human CD122/IL-2RB Recombinant Matched Antibody Pair - PBS only. 84229-4-PBS was coated to a plate as the capture antibody and incubated with serial dilutions of standard Ag3929. 84229-1-PBS was HRP conjugated as the detection antibody. Range: 39.1-2500 pg/mL



Serum of six individual healthy human donors was measured. The CD122/IL-2RB concentration of detected samples was determined to be 92.1 pg/mL with a range of 49.0-189.6 pg/mL.



Human peripheral blood mononuclear cells (PBMC) were cultured unstimulated or stimulated with 10 µg/mL PHA for 3 days. The mean CD122/IL-2RB concentration was not determined in unstimulated PBMC supernatant, 54.6 pg/mL in PHA stimulated PBMC supernatant.