

For Research Use Only

ZC3H13 Recombinant Matched Antibody Pair, PBS Only



Catalog Number:MP01121-3

Capture Antibody Information

Catalog Number:
84228-1-PBS

Host:
Rabbit

Isotype:
IgG

Purification Method:
Protein A purification

Clone ID:
241516A6

Reactivity:
human

Immunogen Catalog Number:
Ag28909

Conjugate:
Unconjugated

Full name:
zinc finger CCCH-type containing 13

Gene ID:
23091

Detection Antibody Information

Catalog Number:
84228-2-PBS

Host:
Rabbit

Isotype:
IgG

Purification Method:
Protein A purification

Clone ID:
241516C5

Reactivity:
human

GenBank:
NM_001076788

Immunogen Catalog Number:
Ag28909

Conjugate:
Unconjugated

Full name:
zinc finger CCCH-type containing 13

Gene ID:
23091

Applications

Tested Applications:
Sandwich ELISA

Range:
78.1-2500 pg/mL (Sandwich ELISA)

Recommended Dilutions:
It is recommended that this reagent should be titrated in each testing system to obtain optimal results.

Product Information

MP01121-3 targets ZC3H13 in immunoassays as a matched antibody pair. Validated in Sandwich ELISA.

Capture antibody: ZC3H13 Recombinant antibody, PBS Only (Capture/Detector) 84228-1-PBS (241516A6). 100 µg. Concentration 1 mg/ml.

Detection antibody: ZC3H13 Recombinant antibody, PBS Only (Detector) 84228-2-PBS (241516C5). 100 µg. Concentration 1 mg/ml.

Alternative ZC3H13 matched antibody pairs: MP01121-1, MP01121-2

Unconjugated rabbit recombinant monoclonal antibody pair in PBS only storage buffer at a concentration of 1 mg/mL, ready for conjugation. Created using Proteintech's proprietary in-house recombinant technology. Recombinant production enables unrivalled batch-to-batch consistency, easy scale-up, and future security of supply.

Matched antibody pairs are designed for use in a variety of assays and platforms that require matched antibody pairs.

Antibody use should be optimized for each application and assay.

Storage

Storage:
Store at -80°C.
Storage buffer:
PBS only

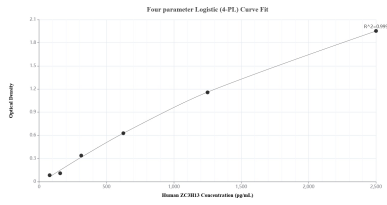
For technical support and original validation data for this product please contact:

T: 1 (888) 4PTGLAB (1-888-478-4522) (toll free in USA), or 1(312) 455-8498 (outside USA)

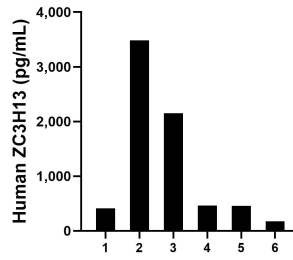
E: proteintech@ptglab.com
W: ptglab.com

This product is exclusively available under Proteintech Group brand and is not available to purchase from any other manufacturer.

Selected Validation Data



Sandwich ELISA standard curve of MP01121-3, Human ZC3H13 Recombinant Matched Antibody Pair - PBS only. 84228-1-PBS was coated to a plate as the capture antibody and incubated with serial dilutions of standard Ag28909. 84228-2-PBS was HRP conjugated as the detection antibody. Range: 78.1-2500 pg/mL.



Serum of six individual healthy human donors was measured. The ZC3H13 concentration of detected samples was determined to be 1,191.0 pg/mL with a range of 175.7-3,486.0 pg/mL.