

For Research Use Only



TMEM16A/DOG1 Recombinant Matched Antibody Pair, PBS Only

Catalog Number:MP01115-3

Capture Antibody Information

Catalog Number:
83567-7-PBS
Host:
Rabbit
Isotype:
IgG
Purification Method:
Protein A purification

Clone ID:
241464D1
Reactivity:
human
Immunogen Catalog Number:
Ag3320

Conjugate:
Unconjugated
Full name:
anoctamin 1, calcium activated chloride channel
Gene ID:
55107

Detection Antibody Information

Catalog Number:
83567-3-PBS
Host:
Rabbit
Isotype:
IgG
Purification Method:
Protein A purification

Clone ID:
241464C11
Reactivity:
human
GenBank:
BC027590
Immunogen Catalog Number:
Ag3320

Conjugate:
Unconjugated
Full name:
anoctamin 1, calcium activated chloride channel
Gene ID:
55107

Applications

Tested Applications:
Sandwich ELISA

Range:
15.6-1000 pg/mL (Sandwich ELISA)

Recommended Dilutions:
It is recommended that this reagent should be titrated in each testing system to obtain optimal results.

Product Information

MP01115-3 targets TMEM16A/DOG1 in immunoassays as a matched antibody pair. Validated in Sandwich ELISA.
Capture antibody: TMEM16A/DOG1 Recombinant antibody, PBS Only (Capture) 83567-7-PBS (241464D1). 100 µg. Concentration 1 mg/ml.
Detection antibody: TMEM16A/DOG1 Recombinant antibody, PBS Only (Detector) 83567-3-PBS (241464C11). 100 µg. Concentration 1 mg/ml.
Unconjugated rabbit recombinant monoclonal antibody pair in PBS only storage buffer at a concentration of 1 mg/mL, ready for conjugation. Created using Proteintech's proprietary in-house recombinant technology. Recombinant production enables unrivalled batch-to-batch consistency, easy scale-up, and future security of supply.
Matched antibody pairs are designed for use in a variety of assays and platforms that require matched antibody pairs.
Antibody use should be optimized for each application and assay.

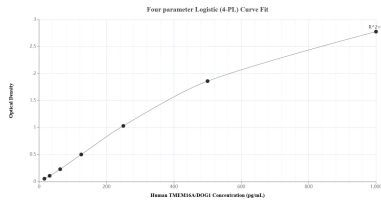
Storage

Storage:
Store at -80°C.
Storage buffer:
PBS only

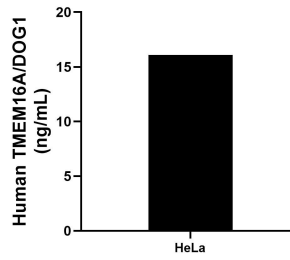
For technical support and original validation data for this product please contact:
T: 1 (888) 4PTGLAB (1-888-478-4522) (toll free in USA), or 1(312) 455-8498 (outside USA) E: proteintech@ptglab.com W: ptglab.com

This product is exclusively available under Proteintech Group brand and is not available to purchase from any other manufacturer.

Selected Validation Data



Sandwich ELISA standard curve of MP01115-3, Human TMEM16A/DOG1 Recombinant Matched Antibody Pair - PBS only. 83567-7-PBS was coated to a plate as the capture antibody and incubated with serial dilutions of standard Ag3320. 83567-3-PBS was HRP conjugated as the detection antibody. Range: 15.6-1000 pg/mL



The mean TMEM16A/DOG1 concentration was determined to be 16.1 ng/mL in HeLa cell extract based on a 1.3 mg/mL extract load.