

For Research Use Only

ELL2 Recombinant Matched Antibody Pair, PBS Only



Catalog Number:MP01114-2

Capture Antibody Information

Catalog Number:
84226-3-PBS

Host:
Rabbit

Isotype:
IgG

Purification Method:
Protein A purification

Clone ID:
241491G1

Reactivity:
human

Immunogen Catalog Number:
Ag3428

Conjugate:
Unconjugated

Full name:
elongation factor, RNA polymerase II, 2

Gene ID:
22936

Detection Antibody Information

Catalog Number:
84226-1-PBS

Host:
Rabbit

Isotype:
IgG

Purification Method:
Protein A purification

Clone ID:
241491C7

Reactivity:
human

GenBank:
BC028412

Immunogen Catalog Number:
Ag3428

Conjugate:
Unconjugated

Full name:
elongation factor, RNA polymerase II, 2

Gene ID:
22936

Applications

Tested Applications:
Sandwich ELISA

Range:
156-5000 pg/mL (Sandwich ELISA)

Recommended Dilutions:
It is recommended that this reagent should be titrated in each testing system to obtain optimal results.

Product Information

MP01114-2 targets ELL2 in immunoassays as a matched antibody pair. Validated in Sandwich ELISA.

Capture antibody: ELL2 Recombinant antibody, PBS Only (Capture) 84226-3-PBS (241491G1). 100 µg. Concentration 1 mg/ml.

Detection antibody: ELL2 Recombinant antibody, PBS Only (Capture/Detector) 84226-1-PBS (241491C7). 100 µg. Concentration 1 mg/ml.

Alternative ELL2 matched antibody pairs: MP01114-1

Unconjugated rabbit recombinant monoclonal antibody pair in PBS only storage buffer at a concentration of 1 mg/mL, ready for conjugation. Created using Proteintech's proprietary in-house recombinant technology. Recombinant production enables unrivalled batch-to-batch consistency, easy scale-up, and future security of supply.

Matched antibody pairs are designed for use in a variety of assays and platforms that require matched antibody pairs.

Antibody use should be optimized for each application and assay.

Storage

Storage:
Store at -80°C.
Storage buffer:
PBS only

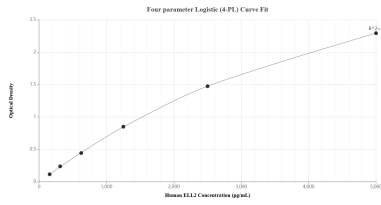
For technical support and original validation data for this product please contact:

T: 1 (888) 4PTGLAB (1-888-478-4522) (toll free in USA), or 1(312) 455-8498 (outside USA)

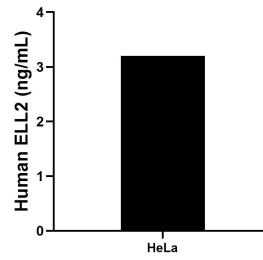
E: proteintech@ptglab.com
W: ptglab.com

This product is exclusively available under Proteintech Group brand and is not available to purchase from any other manufacturer.

Selected Validation Data



Sandwich ELISA standard curve of MP01114-2, Human ELL2 Recombinant Matched Antibody Pair - PBS only. 84226-3-PBS was coated to a plate as the capture antibody and incubated with serial dilutions of standard Ag3428. 84226-1-PBS was HRP conjugated as the detection antibody. Range: 156-5000 pg/mL.



The mean ELL2 concentration was determined to be 3.2 ng/mL in HeLa cell extract based on a 2.8 mg/mL extract load.