

For Research Use Only

SLC7A5 Recombinant Matched Antibody Pair, PBS Only



Catalog Number:MP01094-2

Capture Antibody Information

Catalog Number:
84178-1-PBS

Host:
Rabbit

Isotype:
IgG

Purification Method:
Protein A purification

Clone ID:
241476A1

Reactivity:
human

Immunogen Catalog Number:
Ag29164

Conjugate:
Unconjugated

Full name:
solute carrier family 7 (cationic amino acid transporter, y+ system), member 5

Gene ID:
8140

Detection Antibody Information

Catalog Number:
84178-4-PBS

Host:
Rabbit

Isotype:
IgG

Purification Method:
Protein A purification

Clone ID:
241476G4

Reactivity:
human

GenBank:
BC039692

Immunogen Catalog Number:
Ag29164

Conjugate:
Unconjugated

Full name:
solute carrier family 7 (cationic amino acid transporter, y+ system), member 5

Gene ID:
8140

Applications

Tested Applications:
Cytometric bead array, Sandwich ELISA

Range:
0.625-80 ng/mL (Cytometric Bead Array)
78.1-5000 pg/mL (Sandwich ELISA)

Recommended Dilutions:
It is recommended that this reagent should be titrated in each testing system to obtain optimal results.

Product Information

MP01094-2 targets SLC7A5 in immunoassays as a matched antibody pair. Validated in Cytometric bead array, Sandwich ELISA.

Capture antibody: SLC7A5 Recombinant antibody, PBS Only (Capture) 84178-1-PBS (241476A1). 100 µg. Concentration 1 mg/ml.

Detection antibody: SLC7A5 Recombinant antibody, PBS Only (Detector) 84178-4-PBS (241476G4). 100 µg. Concentration 1 mg/ml.

Alternative SLC7A5 matched antibody pairs: MP01094-1, MP01094-3

Unconjugated rabbit recombinant monoclonal antibody pair in PBS only storage buffer at a concentration of 1 mg/mL, ready for conjugation. Created using Proteintech's proprietary in-house recombinant technology. Recombinant production enables unrivalled batch-to-batch consistency, easy scale-up, and future security of supply.

Matched antibody pairs are designed for use in a variety of assays and platforms that require matched antibody pairs.

Antibody use should be optimized for each application and assay.

Storage

Storage:
Store at -80°C.
Storage buffer:
PBS only

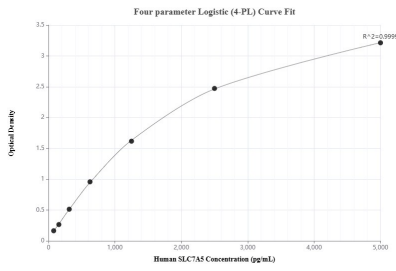
For technical support and original validation data for this product please contact:

T: 1 (888) 4PTGLAB (1-888-478-4522) (toll free in USA), or 1(312) 455-8498 (outside USA)

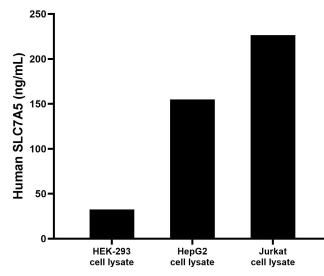
E: proteintech@ptglab.com
W: ptglab.com

This product is exclusively available under Proteintech Group brand and is not available to purchase from any other manufacturer.

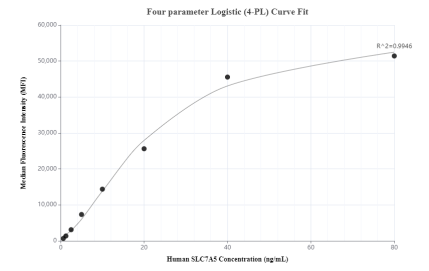
Selected Validation Data



Sandwich ELISA standard curve of MP01094-2, Human SLC7A5 Recombinant Matched Antibody Pair - PBS only. 84178-1-PBS was coated to a plate as the capture antibody and incubated with serial dilutions of standard Ag29164. 84178-4-PBS was HRP conjugated as the detection antibody. Range: 78.1-5000 pg/mL



HEK-293, HepG2 and Jurkat cell lysates were measured. The human SLC7A5 concentration of detected samples was determined to be 32.56 ng/mL (based on a 2.0 mg/mL extract load) in HEK-293 cell lysate, 154.94 ng/mL (based on a 2.0 mg/mL extract load) in HepG2 cell lysate and 226.39 ng/mL (based on a 2.3 mg/mL extract load) in Jurkat cell lysate.



Cytometric bead array standard curve of MP01094-2, SLC7A5 Recombinant Matched Antibody Pair, PBS Only. Capture antibody: 84178-1-PBS. Detection antibody: 84178-4-PBS. Standard: Ag29164. Range: 0.625-80 ng/mL