

For Research Use Only

# SLC7A5 Recombinant Matched Antibody Pair, PBS Only



Catalog Number:MP01094-1

## Capture Antibody Information

Catalog Number:  
84178-1-PBS

Host:  
Rabbit

Isotype:  
IgG

Purification Method:  
Protein A purification

Clone ID:  
241476A1

Reactivity:  
human

Immunogen Catalog Number:  
Ag29164

Conjugate:  
Unconjugated

Full name:  
solute carrier family 7 (cationic amino acid transporter, y+ system), member 5

Gene ID:  
8140

## Detection Antibody Information

Catalog Number:  
84178-3-PBS

Host:  
Rabbit

Isotype:  
IgG

Purification Method:  
Protein A purification

Clone ID:  
241476F2

Reactivity:  
human

GenBank:  
BC039692

Immunogen Catalog Number:  
Ag29164

Conjugate:  
Unconjugated

Full name:  
solute carrier family 7 (cationic amino acid transporter, y+ system), member 5

Gene ID:  
8140

## Applications

Tested Applications:  
Cytometric bead array

Range:  
0.625-80 ng/mL (Cytometric Bead Array)

Recommended Dilutions:  
It is recommended that this reagent should be titrated in each testing system to obtain optimal results.

## Product Information

MP01094-1 targets SLC7A5 in immunoassays as a matched antibody pair. Validated in Cytometric bead array.

Capture antibody: SLC7A5 Recombinant antibody, PBS Only (Capture) 84178-1-PBS (241476A1). 100 µg. Concentration 1 mg/ml.

Detection antibody: SLC7A5 Recombinant antibody, PBS Only (Capture/Detector) 84178-3-PBS (241476F2). 100 µg. Concentration 1 mg/ml.

Alternative SLC7A5 matched antibody pairs: MP01094-2, MP01094-3

Unconjugated rabbit recombinant monoclonal antibody pair in PBS only storage buffer at a concentration of 1 mg/mL, ready for conjugation. Created using Proteintech's proprietary in-house recombinant technology. Recombinant production enables unrivalled batch-to-batch consistency, easy scale-up, and future security of supply.

Matched antibody pairs are designed for use in a variety of assays and platforms that require matched antibody pairs.

Antibody use should be optimized for each application and assay.

## Storage

Storage:  
Store at -80°C.  
Storage buffer:  
PBS only

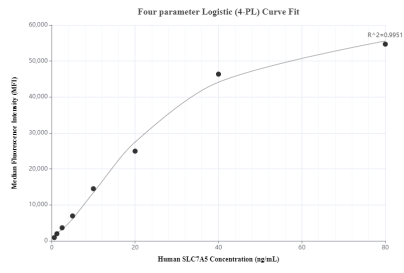
For technical support and original validation data for this product please contact:

T: 1 (888) 4PTGLAB (1-888-478-4522) (toll free in USA), or 1(312) 455-8498 (outside USA)

E: [proteintech@ptglab.com](mailto:proteintech@ptglab.com)  
W: [ptglab.com](http://ptglab.com)

This product is exclusively available under Proteintech Group brand and is not available to purchase from any other manufacturer.

## Selected Validation Data



Cytometric bead array standard curve of MP01094-1, SLC7A5 Recombinant Matched Antibody Pair, PBS Only. Capture antibody: 84178-1-PBS. Detection antibody: 84178-3-PBS. Standard: Ag29164. Range: 0.625-80 ng/mL