

For Research Use Only

# CD48 Recombinant Matched Antibody Pair, PBS Only



Catalog Number: MP01093-2

## Capture Antibody Information

Catalog Number:  
84186-4-PBS

Host:  
Rabbit

Isotype:  
IgG

Purification Method:  
Protein A purification

Clone ID:  
241389F8

Reactivity:  
human

Conjugate:  
Unconjugated

Full name:  
CD48 molecule

Gene ID:  
962

## Detection Antibody Information

Catalog Number:  
84186-3-PBS

Host:  
Rabbit

Isotype:  
IgG

Purification Method:  
Protein A purification

Clone ID:  
241389E5

Reactivity:  
human

GenBank:  
BC016182

Conjugate:  
Unconjugated

Full name:  
CD48 molecule

Gene ID:  
962

## Applications

Tested Applications:  
Cytometric bead array, Sandwich ELISA

Range:  
0.313-40 ng/mL (Cytometric Bead Array)  
39.1-2500 pg/mL (Sandwich ELISA)

Recommended Dilutions:  
It is recommended that this reagent should be titrated in each testing system to obtain optimal results.

## Product Information

MP01093-2 targets CD48 in immunoassays as a matched antibody pair. Validated in Cytometric bead array, Sandwich ELISA.

Capture antibody: CD48 Recombinant antibody, PBS Only (Capture) 84186-4-PBS (241389F8). 100 µg. Concentration 1 mg/mL.

Detection antibody: CD48 Recombinant antibody, PBS Only (Detector) 84186-3-PBS (241389E5). 100 µg. Concentration 1 mg/mL.

Alternative CD48 matched antibody pairs: MP01093-1, MP01093-3

Unconjugated rabbit recombinant monoclonal antibody pair in PBS only storage buffer at a concentration of 1 mg/mL, ready for conjugation. Created using Proteintech's proprietary in-house recombinant technology. Recombinant production enables unrivalled batch-to-batch consistency, easy scale-up, and future security of supply.

Matched antibody pairs are designed for use in a variety of assays and platforms that require matched antibody pairs.

Antibody use should be optimized for each application and assay.

## Storage

Storage:  
Store at -80°C.  
Storage buffer:  
PBS only

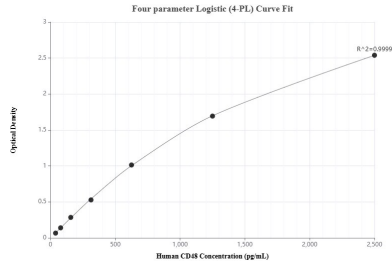
For technical support and original validation data for this product please contact:

T: 1 (888) 4PTGLAB (1-888-478-4522) (toll free in USA), or 1(312) 455-8498 (outside USA)

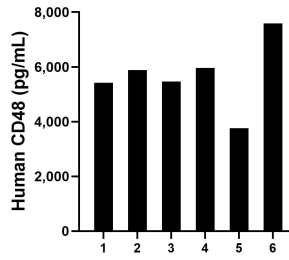
E: [proteintech@ptglab.com](mailto:proteintech@ptglab.com)  
W: [ptglab.com](http://ptglab.com)

This product is exclusively available under Proteintech Group brand and is not available to purchase from any other manufacturer.

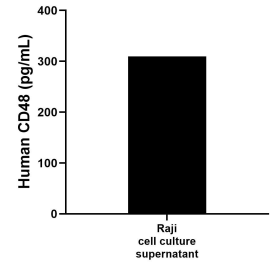
## Selected Validation Data



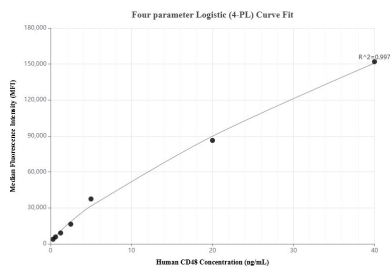
Sandwich ELISA standard curve of MP01093-2, Human CD48 Recombinant Matched Antibody Pair - PBS only. 84186-4-PBS was coated to a plate as the capture antibody and incubated with serial dilutions of standard Eg1005. 84186-3-PBS was HRP conjugated as the detection antibody. Range: 39.1-2500 pg/mL



Serum of six individual healthy human donors was measured. The human CD48 concentration of detected samples was determined to be 5,680.6 pg/mL with a range of 3,761.2 - 7,588.7 pg/mL.



Raji cells ( $5 \times 10^6$  cells/mL) were cultured in RPMI supplemented with 10% fetal bovine serum, 2 mM L-glutamine, 100 U/mL penicillin, and 100 µg/mL streptomycin sulfate. An aliquot of the cell culture supernate was removed, assayed for human CD48, and measured 309.5 pg/mL.



Cytometric bead array standard curve of MP01093-2, CD48 Recombinant Matched Antibody Pair, PBS Only. Capture antibody: 84186-4-PBS. Detection antibody: 84186-3-PBS. Standard: Eg1005. Range: 0.313-40 ng/mL