

For Research Use Only

HAVCR2 Recombinant Matched Antibody Pair, PBS Only



Catalog Number:MP01083-2

Capture Antibody Information

Catalog Number:

84183-4-PBS

Host:

Rabbit

Isotype:

IgG

Purification Method:

Protein A purification

Clone ID:

241422E9

Reactivity:

human

Conjugate:

Unconjugated

Full name:

hepatitis A virus cellular receptor 2

Gene ID:

84868

Detection Antibody Information

Catalog Number:

84183-3-PBS

Host:

Rabbit

Isotype:

IgG

Purification Method:

Protein A purification

Clone ID:

241422C9

Reactivity:

human

GenBank:

BC020843

Conjugate:

Unconjugated

Full name:

hepatitis A virus cellular receptor 2

Gene ID:

84868

Applications

Tested Applications:

Cytometric bead array, Sandwich ELISA

Range:

0.781-50 ng/mL (Cytometric Bead Array)
62.5-4000 pg/mL (Sandwich ELISA)

Recommended Dilutions:

It is recommended that this reagent should be titrated in each testing system to obtain optimal results.

Product Information

MP01083-2 targets HAVCR2 in immunoassays as a matched antibody pair. Validated in Cytometric bead array, Sandwich ELISA.

Capture antibody: HAVCR2 Recombinant antibody, PBS Only (Capture) 84183-4-PBS (241422E9). 100 µg. Concentration 1 mg/ml.

Detection antibody: HAVCR2 Recombinant antibody, PBS Only (Detector) 84183-3-PBS (241422C9). 100 µg. Concentration 1 mg/ml.

Alternative HAVCR2 matched antibody pairs: MP01083-1, MP01083-3

Unconjugated rabbit recombinant monoclonal antibody pair in PBS only storage buffer at a concentration of 1 mg/mL, ready for conjugation. Created using Proteintech's proprietary in-house recombinant technology. Recombinant production enables unrivalled batch-to-batch consistency, easy scale-up, and future security of supply.

Matched antibody pairs are designed for use in a variety of assays and platforms that require matched antibody pairs.

Antibody use should be optimized for each application and assay.

Storage

Storage:

Store at -80°C.

Storage buffer:

PBS only

For technical support and original validation data for this product please contact:

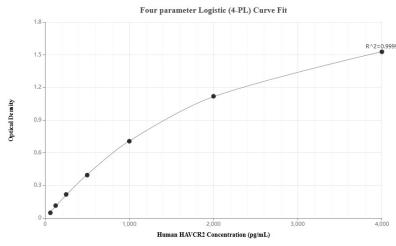
T: 1 (888) 4PTGLAB (1-888-478-4522) (toll free in USA), or 1(312) 455-8498 (outside USA)

E: proteintech@ptglab.com

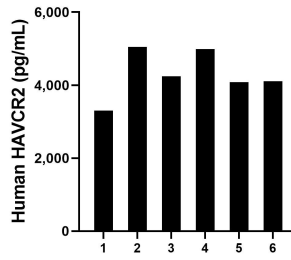
W: ptglab.com

This product is exclusively available under Proteintech Group brand and is not available to purchase from any other manufacturer.

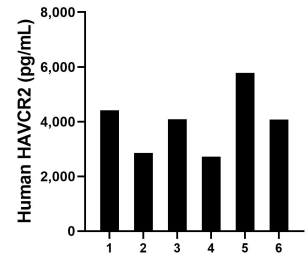
Selected Validation Data



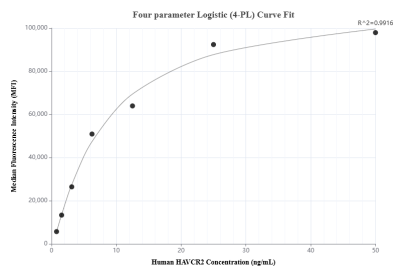
Sandwich ELISA standard curve of MP01083-2, Human HAVCR2 Recombinant Matched Antibody Pair - PBS only. 84183-4-PBS was coated to a plate as the capture antibody and incubated with serial dilutions of standard RP02340. 84183-3-PBS was HRP conjugated as the detection antibody. Range: 62.5-4000 pg/mL



Serum of six individual healthy human donors was measured. The human HAVCR2 concentration of detected samples was determined to be 4,294.0 pg/mL with a range of 3304.0 - 5046.2 pg/mL



Plasma of six individual healthy human donors was measured. The human HAVCR2 concentration of detected samples was determined to be 3990.1 pg/mL with a range of 2716.1- 5783.5 pg/mL



Cytometric bead array standard curve of MP01083-2, HAVCR2 Recombinant Matched Antibody Pair, PBS Only. Capture antibody: 84183-4-PBS. Detection antibody: 84183-3-PBS. Standard: RP02340. Range: 0.781-50 ng/mL