

Kininogen-1 Recombinant Matched Antibody Pair, PBS Only

Catalog Number:MP01081-2

Capture Antibody Information

Catalog Number:
84175-4-PBS

Host:
Rabbit

Isotype:
IgG

Purification Method:
Protein A purification

Clone ID:
241397G9

Reactivity:
human

Conjugate:
Unconjugated

Full name:
kininogen 1

Gene ID:
3827

Detection Antibody Information

Catalog Number:
84175-2-PBS

Host:
Rabbit

Isotype:
IgG

Purification Method:
Protein A purification

Clone ID:
241397C5

Reactivity:
human

GenBank:
NM_001102416.3

Conjugate:
Unconjugated

Full name:
kininogen 1

Gene ID:
3827

Applications

Tested Applications:
Cytometric bead array, Sandwich ELISA

Range:
0.781-100 ng/mL (Cytometric Bead Array)
39.1-2500 pg/mL (Sandwich ELISA)

Recommended Dilutions:
It is recommended that this reagent should be titrated in each testing system to obtain optimal results.

Product Information

MP01081-2 targets Kininogen-1 in immunoassays as a matched antibody pair. Validated in Cytometric bead array, Sandwich ELISA.

Capture antibody: Kininogen-1 Recombinant antibody, PBS Only (Capture) 84175-4-PBS (241397G9). 100 µg. Concentration 1 mg/ml.

Detection antibody: Kininogen-1 Recombinant antibody, PBS Only (Detector) 84175-2-PBS (241397C5). 100 µg. Concentration 1 mg/ml.

Alternative Kininogen-1 matched antibody pairs: MP01081-1, MP01081-3

Unconjugated rabbit recombinant monoclonal antibody pair in PBS only storage buffer at a concentration of 1 mg/mL, ready for conjugation. Created using Proteintech's proprietary in-house recombinant technology. Recombinant production enables unrivalled batch-to-batch consistency, easy scale-up, and future security of supply.

Matched antibody pairs are designed for use in a variety of assays and platforms that require matched antibody pairs.

Antibody use should be optimized for each application and assay.

Storage

Storage:
Store at -80°C.
Storage buffer:
PBS only

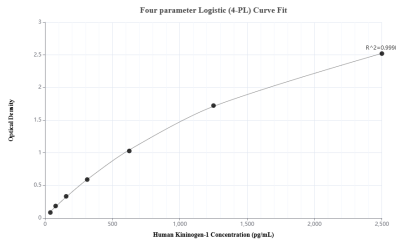
For technical support and original validation data for this product please contact:

T: 1 (888) 4PTGLAB (1-888-478-4522) (toll free in USA), or 1(312) 455-8498 (outside USA)

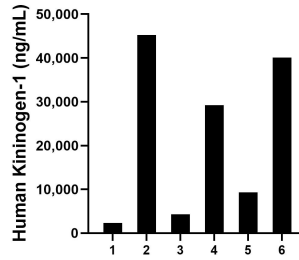
E: proteintech@ptglab.com
W: ptglab.com

This product is exclusively available under Proteintech Group brand and is not available to purchase from any other manufacturer.

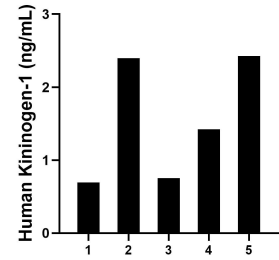
Selected Validation Data



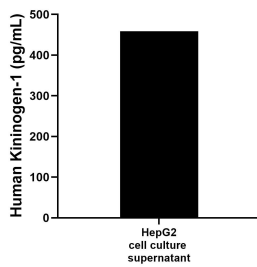
Sandwich ELISA standard curve of MP01081-2, Human Kininogen-1 Recombinant Matched Antibody Pair - PBS only. 84175-4-PBS was coated to a plate as the capture antibody and incubated with serial dilutions of standard Eg1162. 84175-2-PBS was HRP conjugated as the detection antibody. Range: 39.1-2500pg/mL



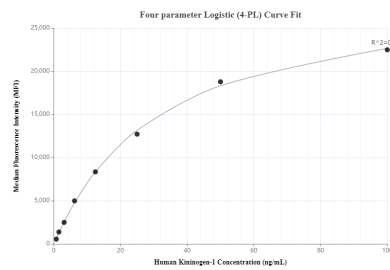
Serum of six individual healthy human donors was measured. The human Kininogen-1 concentration of detected samples was determined to be 21,735.55 ng/mL with a range of 2,325.73 - 45,247.60 ng/mL



Saliva of five individual healthy human donors was measured. The human Kininogen-1 concentration of detected samples was determined to be 1.55 ng/mL with a range of 0.70 - 2.43 ng/mL



HepG2 (human hepatocellular carcinoma cells) was cultured in DMEM supplemented with 10% fetal bovine serum, 2.5 mM L-glutamine, 100 U/mL penicillin, and 100 µg/mL streptomycin sulfate. An aliquot of the cell culture supernate was removed, assayed for human Kininogen-1, and measured 458.7 pg/mL



Cytometric bead array standard curve of MP01081-2, Kininogen-1 Recombinant Matched Antibody Pair, PBS Only. Capture antibody: 84175-4-PBS. Detection antibody: 84175-2-PBS. Standard: Eg1162. Range: 0.781-100 ng/mL