

For Research Use Only

UCH-L1 Recombinant Matched Antibody Pair, PBS Only



Catalog Number:MP01079-2

Capture Antibody Information

Catalog Number:

84154-2-PBS

Host:

Rabbit

Isotype:

IgG

Purification Method:

Protein A purification

Clone ID:

241107C5

Reactivity:

human

Immunogen Catalog Number:

Ag6490

Conjugate:

Unconjugated

Full name:

ubiquitin carboxyl-terminal esterase L1 (ubiquitin thiolesterase)

Gene ID:

7345

Detection Antibody Information

Catalog Number:

84154-3-PBS

Host:

Rabbit

Isotype:

IgG

Purification Method:

Protein A purification

Clone ID:

241107G1

Reactivity:

human

GenBank:

BC000332

Immunogen Catalog Number:

Ag6490

Conjugate:

Unconjugated

Full name:

ubiquitin carboxyl-terminal esterase L1 (ubiquitin thiolesterase)

Gene ID:

7345

Applications

Tested Applications:

Cytometric bead array, Sandwich ELISA

Range:

0.781-100 ng/mL (Cytometric Bead Array)
0.625-20 ng/mL (Sandwich ELISA)

Recommended Dilutions:

It is recommended that this reagent should be titrated in each testing system to obtain optimal results.

Product Information

MP01079-2 targets UCH-L1 in immunoassays as a matched antibody pair. Validated in Cytometric bead array, Sandwich ELISA.

Capture antibody: UCH-L1/PGP9.5 Recombinant antibody, PBS Only (Capture) 84154-2-PBS (241107C5). 100 µg. Concentration 1 mg/mL.

Detection antibody: UCH-L1/PGP9.5 Recombinant antibody, PBS Only (Capture/Detector) 84154-3-PBS (241107G1). 100 µg. Concentration 1 mg/mL.

Alternative UCH-L1 matched antibody pairs: MP01079-3

Unconjugated rabbit recombinant monoclonal antibody pair in PBS only storage buffer at a concentration of 1 mg/mL, ready for conjugation. Created using Proteintech's proprietary in-house recombinant technology. Recombinant production enables unrivalled batch-to-batch consistency, easy scale-up, and future security of supply.

Matched antibody pairs are designed for use in a variety of assays and platforms that require matched antibody pairs.

Antibody use should be optimized for each application and assay.

Storage

Storage:

Store at -80°C.

Storage buffer:

PBS only

For technical support and original validation data for this product please contact:

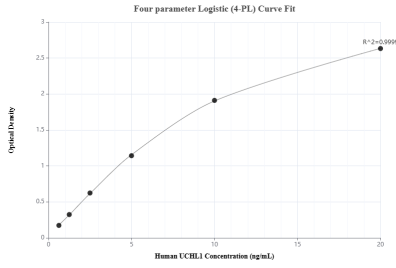
T: 1 (888) 4PTGLAB (1-888-478-4522) (toll free in USA), or 1(312) 455-8498 (outside USA)

E: proteintech@ptglab.com

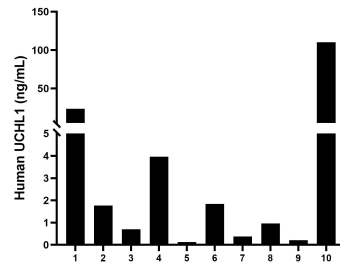
W: ptglab.com

This product is exclusively available under Proteintech Group brand and is not available to purchase from any other manufacturer.

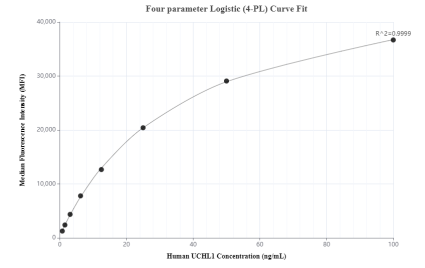
Selected Validation Data



Sandwich ELISA standard curve of MP01079-2, Human UCHL1 Recombinant Matched Antibody Pair - PBS only. 84154-2-PBS was coated to a plate as the capture antibody and incubated with serial dilutions of standard Ag6490. 84154-3-PBS was HRP conjugated as the detection antibody. Range: 0.625-20 ng/mL



Serum of ten individual healthy human donors was measured. The human UCHL1 concentration of detected samples was determined to be 8.99 ng/mL with a range of 0.13 - 110.20 ng/mL.



Cytometric bead array standard curve of MP01079-2, UCHL1 Recombinant Matched Antibody Pair, PBS Only. Capture antibody: 84154-2-PBS. Detection antibody: 84154-3-PBS. Standard: Ag6490. Range: 0.781-100 ng/mL