

For Research Use Only



# IL-13 Recombinant Matched Antibody Pair, PBS Only

Catalog Number:MP01078-3

## Capture Antibody Information

**Catalog Number:**  
84158-5-PBS  
**Host:**  
Rabbit  
**Isotype:**  
IgG  
**Purification Method:**  
Protein A purification

**Clone ID:**  
241396H6  
**Reactivity:**  
human

**Conjugate:**  
Unconjugated  
**Full name:**  
interleukin 13  
**Gene ID:**  
3596

## Detection Antibody Information

**Catalog Number:**  
84158-3-PBS  
**Host:**  
Rabbit  
**Isotype:**  
IgG  
**Purification Method:**  
Protein A purification

**Clone ID:**  
241396E12  
**Reactivity:**  
human  
**GenBank:**  
AAK53823

**Conjugate:**  
Unconjugated  
**Full name:**  
interleukin 13  
**Gene ID:**  
3596

## Applications

**Tested Applications:**  
Sandwich ELISA

**Range:**  
62.5-4000 pg/mL (Sandwich ELISA)

**Recommended Dilutions:**  
It is recommended that this reagent should be titrated in each testing system to obtain optimal results.

## Product Information

MP01078-3 targets IL-13 in immunoassays as a matched antibody pair. Validated in Sandwich ELISA.

Capture antibody: IL13 Recombinant antibody, PBS Only (Capture) 84158-5-PBS (241396H6). 100 µg. Concentration 1 mg/ml.

Detection antibody: IL-13 Recombinant antibody, PBS Only (Detector) 84158-3-PBS (241396E12). 100 µg. Concentration 1 mg/ml.

Unconjugated rabbit recombinant monoclonal antibody pair in PBS only storage buffer at a concentration of 1 mg/mL, ready for conjugation. Created using Proteintech's proprietary in-house recombinant technology. Recombinant production enables unrivalled batch-to-batch consistency, easy scale-up, and future security of supply.

Matched antibody pairs are designed for use in a variety of assays and platforms that require matched antibody pairs.

Antibody use should be optimized for each application and assay.

## Storage

**Storage:**  
Store at -80°C.  
**Storage buffer:**  
PBS only

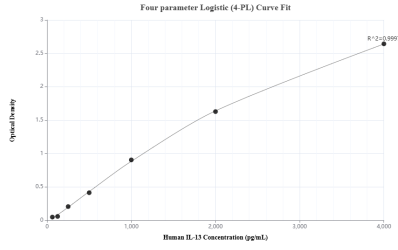
For technical support and original validation data for this product please contact:

T: 1 (888) 4PTGLAB (1-888-478-4522) (toll free in USA), or 1(312) 455-8498 (outside USA)

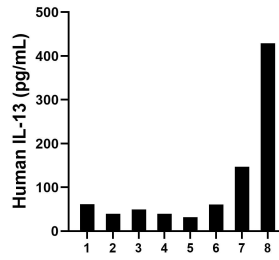
E: [proteintech@ptglab.com](mailto:proteintech@ptglab.com)  
W: [ptglab.com](http://ptglab.com)

**This product is exclusively available under Proteintech Group brand and is not available to purchase from any other manufacturer.**

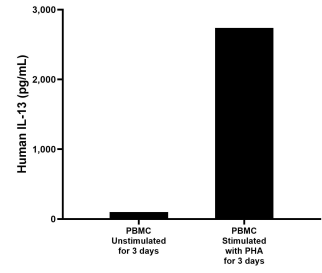
## Selected Validation Data



Sandwich ELISA standard curve of MP01078-3, Human IL-13 Recombinant Matched Antibody Pair - PBS only. 84158-5-PBS was coated to a plate as the capture antibody and incubated with serial dilutions of standard Eg0061. 84158-3-PBS was HRP conjugated as the detection antibody. Range: 62.5-4000 pg/mL



Serum of eight individual healthy human donors was measured. The human IL-13 concentration of detected samples was determined to be 50.3 pg/mL with a range of 31.9 - 429.1 pg/mL.



Human peripheral blood mononuclear cells (PBMC) were cultured unstimulated or stimulated with 10 µg/mL PHA for 3 days. The mean IL-13 concentration was determined to be 101.1 pg/mL in unstimulated PBMC supernatant, 2,738.4 pg/mL in PHA stimulated PBMC supernatant.