

For Research Use Only

# PTGS1 Recombinant Matched Antibody Pair, PBS Only



Catalog Number:MP01068-4

## Capture Antibody Information

Catalog Number:  
84151-5-PBS

Host:  
Rabbit

Isotype:  
IgG

Purification Method:  
Protein A purification

Clone ID:  
241373F11

Reactivity:  
human

Immunogen Catalog Number:  
Ag4055

Conjugate:  
Unconjugated

Full name:  
prostaglandin-endoperoxide synthase 1 (prostaglandin G/H synthase and cyclooxygenase)

Gene ID:  
5742

## Detection Antibody Information

Catalog Number:  
84151-2-PBS

Host:  
Rabbit

Isotype:  
IgG

Purification Method:  
Protein A purification

Clone ID:  
241373B7

Reactivity:  
human

GenBank:  
BC029840

Immunogen Catalog Number:  
Ag4055

Conjugate:  
Unconjugated

Full name:  
prostaglandin-endoperoxide synthase 1 (prostaglandin G/H synthase and cyclooxygenase)

Gene ID:  
5742

## Applications

Tested Applications:  
Sandwich ELISA

Range:  
1.56-50 ng/mL (Sandwich ELISA)

Recommended Dilutions:  
It is recommended that this reagent should be titrated in each testing system to obtain optimal results.

## Product Information

MP01068-4 targets PTGS1 in immunoassays as a matched antibody pair. Validated in Sandwich ELISA.

Capture antibody: PTGS1 Recombinant antibody, PBS Only (Capture) 84151-5-PBS (241373F11). 100 µg. Concentration 1 mg/ml.

Detection antibody: COX-1/Cyclooxygenase-1 Recombinant antibody, PBS Only (Capture/Detector) 84151-2-PBS (241373B7). 100 µg. Concentration 1 mg/ml.

Alternative PTGS1 matched antibody pairs: MP01068-2

Unconjugated rabbit recombinant monoclonal antibody pair in PBS only storage buffer at a concentration of 1 mg/mL, ready for conjugation. Created using Proteintech's proprietary in-house recombinant technology. Recombinant production enables unrivalled batch-to-batch consistency, easy scale-up, and future security of supply.

Matched antibody pairs are designed for use in a variety of assays and platforms that require matched antibody pairs.

Antibody use should be optimized for each application and assay.

## Storage

Storage:  
Store at -80°C.  
Storage buffer:  
PBS only

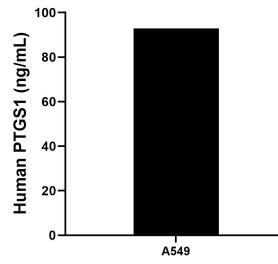
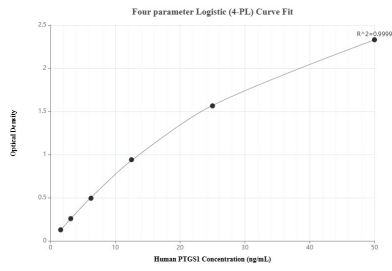
For technical support and original validation data for this product please contact:

T: 1 (888) 4PTGLAB (1-888-478-4522) (toll free in USA), or 1(312) 455-8498 (outside USA)

E: [proteintech@ptglab.com](mailto:proteintech@ptglab.com)  
W: [ptglab.com](http://ptglab.com)

This product is exclusively available under Proteintech Group brand and is not available to purchase from any other manufacturer.

## Selected Validation Data



Sandwich ELISA standard curve of MP01068-4, Human PTGS1 Recombinant Matched Antibody Pair - PBS only. 84151-5-PBS was coated to a plate as the capture antibody and incubated with serial dilutions of standard Ag4055. 84151-2-PBS was HRP conjugated as the detection antibody. Range: 1.56-50 ng/mL

The mean PTGS1 concentration was determined to be 92.92 ng/mL in A549 cell extract based on a 2.5 mg/mL extract load.