

For Research Use Only

CD155/PVR Recombinant Matched Antibody Pair, PBS Only



Catalog Number:MP01053-4

Capture Antibody Information

Catalog Number:
84138-6-PBS
Host:
Rabbit
Isotype:
IgG
Purification Method:
Protein A purification

Clone ID:
241405F7
Reactivity:
human

Conjugate:
Unconjugated
Full name:
poliovirus receptor
Gene ID:
5817

Detection Antibody Information

Catalog Number:
84138-2-PBS
Host:
Rabbit
Isotype:
IgG
Purification Method:
Protein A purification

Clone ID:
241405D2
Reactivity:
human
GenBank:
BC015542

Conjugate:
Unconjugated
Full name:
poliovirus receptor
Gene ID:
5817

Applications

Tested Applications:
Sandwich ELISA

Range:
78.1-5000 pg/mL (Sandwich ELISA)

Recommended Dilutions:
It is recommended that this reagent should be titrated in each testing system to obtain optimal results.

Product Information

MP01053-4 targets CD155/PVR in immunoassays as a matched antibody pair. Validated in Sandwich ELISA.

Capture antibody: CD155/PVR Recombinant antibody, PBS Only (Capture) 84138-6-PBS (241405F7). 100 µg. Concentration 1 mg/ml.

Detection antibody: CD155/PVR Recombinant antibody, PBS Only (Detector) 84138-2-PBS (241405D2). 100 µg. Concentration 1 mg/ml.

Alternative CD155/PVR matched antibody pairs: MP00705-1, MP00705-2, MP00705-3, MP01053-1, MP01053-2, MP01053-3, MP50402-1, MP50402-2

Unconjugated rabbit recombinant monoclonal antibody pair in PBS only storage buffer at a concentration of 1 mg/mL, ready for conjugation. Created using Proteintech's proprietary in-house recombinant technology. Recombinant production enables unrivalled batch-to-batch consistency, easy scale-up, and future security of supply.

Matched antibody pairs are designed for use in a variety of assays and platforms that require matched antibody pairs.

Antibody use should be optimized for each application and assay.

Storage

Storage:
Store at -80°C.
Storage buffer:
PBS only

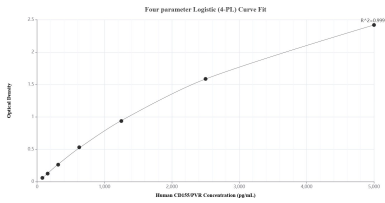
For technical support and original validation data for this product please contact:

T: 1 (888) 4PTGLAB (1-888-478-4522) (toll free in USA), or 1(312) 455-8498 (outside USA)

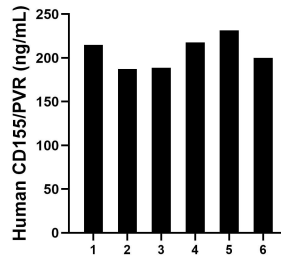
E: proteintech@ptglab.com
W: ptglab.com

This product is exclusively available under Proteintech Group brand and is not available to purchase from any other manufacturer.

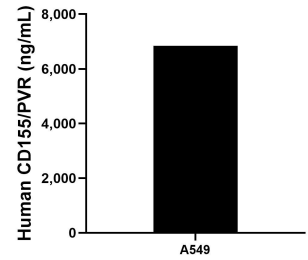
Selected Validation Data



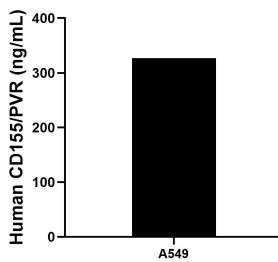
Sandwich ELISA standard curve of MP01053-4, Human CD155/PVR Recombinant Matched Antibody Pair - PBS only. 84138-6-PBS was coated to a plate as the capture antibody and incubated with serial dilutions of standard Eg0971. 84138-2-PBS was HRP conjugated as the detection antibody. Range: 78.1-5000 pg/mL



Serum of six individual healthy human donors was measured. The CD155/PVR concentration of detected samples was determined to be 206.7 ng/mL with a range of 187.5-231.4 ng/mL.



A549 were cultured in DMEM supplemented with 10% fetal bovine serum, 2.5 mM L-glutamine, 100 U/mL penicillin, and 100 µg/mL streptomycin sulfate. An aliquot of the cell culture supernate was removed, assayed for human CD155/PVR, and measured 6,841.2 pg/mL.



The mean CD155/PVR concentration was determined to be 327.1 ng/mL in A549 cell extract based on a 2.5 mg/mL extract load.