

For Research Use Only

FABP6 Recombinant Matched Antibody Pair, PBS Only



Catalog Number:MP01052-2

Capture Antibody Information

Catalog Number:
84132-1-PBS

Host:
Rabbit

Isotype:
IgG

Purification Method:
Protein A purification

Clone ID:
241095A7

Reactivity:
human

Immunogen Catalog Number:
Ag4788

Conjugate:
Unconjugated

Full name:
fatty acid binding protein 6, ileal

Gene ID:
2172

Detection Antibody Information

Catalog Number:
84132-2-PBS

Host:
Rabbit

Isotype:
IgG

Purification Method:
Protein A purification

Clone ID:
241095A11

Reactivity:
human

GenBank:
BC022489

Immunogen Catalog Number:
Ag4788

Conjugate:
Unconjugated

Full name:
fatty acid binding protein 6, ileal

Gene ID:
2172

Applications

Tested Applications:
Sandwich ELISA

Range:
0.625-20 ng/mL (Sandwich ELISA)

Recommended Dilutions:
It is recommended that this reagent should be titrated in each testing system to obtain optimal results.

Product Information

MP01052-2 targets FABP6 in immunoassays as a matched antibody pair. Validated in Sandwich ELISA.

Capture antibody: FABP6 Recombinant antibody, PBS Only (Capture/Detector) 84132-1-PBS (241095A7). 100 µg. Concentration 1 mg/ml.

Detection antibody: FABP6 Recombinant antibody, PBS Only (Capture/Detector) 84132-2-PBS (241095A11). 100 µg. Concentration 1 mg/ml.

Unconjugated rabbit recombinant monoclonal antibody pair in PBS only storage buffer at a concentration of 1 mg/mL, ready for conjugation. Created using Proteintech's proprietary in-house recombinant technology. Recombinant production enables unrivalled batch-to-batch consistency, easy scale-up, and future security of supply.

Matched antibody pairs are designed for use in a variety of assays and platforms that require matched antibody pairs.

Antibody use should be optimized for each application and assay.

Storage

Storage:
Store at -80°C.
Storage buffer:
PBS only

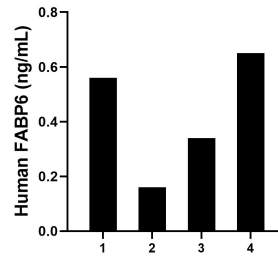
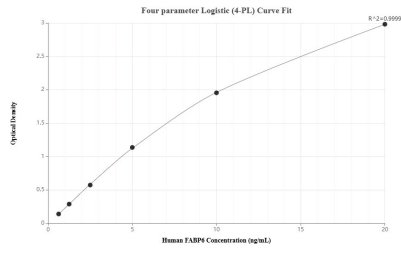
For technical support and original validation data for this product please contact:

T: 1 (888) 4PTGLAB (1-888-478-4522) (toll free in USA), or 1(312) 455-8498 (outside USA)

E: proteintech@ptglab.com
W: ptglab.com

This product is exclusively available under Proteintech Group brand and is not available to purchase from any other manufacturer.

Selected Validation Data



Sandwich ELISA standard curve of MP01052-2, Human FABP6 Recombinant Matched Antibody Pair - PBS only. 84132-1-PBS was coated to a plate as the capture antibody and incubated with serial dilutions of standard Ag4788. 84132-2-PBS was HRP conjugated as the detection antibody. Range: 0.625-20 ng/mL

Serum of four individual healthy human donors was measured. The human FABP6 concentration of detected samples was determined to be 0.43 ng/mL with a range of 0.16 - 0.65 ng/mL