

For Research Use Only

# Mouse CD80/B7-1 Recombinant Matched Antibody Pair, PBS Only



Catalog Number:MP01051-4

## Capture Antibody Information

Catalog Number:  
84137-6-PBS

Host:  
Rabbit

Isotype:  
IgG

Purification Method:  
Protein A purification

Clone ID:  
241371A6

Reactivity:  
mouse

Conjugate:  
Unconjugated

Full name:  
CD80 antigen

Gene ID:  
12519

## Detection Antibody Information

Catalog Number:  
84137-4-PBS

Host:  
Rabbit

Isotype:  
IgG

Purification Method:  
Protein A purification

Clone ID:  
241371E12

Reactivity:  
mouse

GenBank:  
NM\_009855.2

Conjugate:  
Unconjugated

Full name:  
CD80 antigen

Gene ID:  
12519

## Applications

Tested Applications:  
Sandwich ELISA

Range:  
15.6-1000 pg/mL (Sandwich ELISA)

Recommended Dilutions:  
It is recommended that this reagent should be titrated in each testing system to obtain optimal results.

## Product Information

MP01051-4 targets CD80/B7-1 in immunoassays as a matched antibody pair. Validated in Sandwich ELISA.

Capture antibody: Mouse CD80 Recombinant antibody, PBS Only (Capture) 84137-6-PBS (241371A6). 100 µg. Concentration 1 mg/ml.

Detection antibody: Mouse CD80/B7-1 Recombinant antibody, PBS Only (Capture/Detector) 84137-4-PBS (241371E12). 100 µg. Concentration 1 mg/ml.

Alternative CD80/B7-1 matched antibody pairs: MP00284-1, MP01051-1, MP01051-2, MP01051-3, MP50098-1

Unconjugated rabbit recombinant monoclonal antibody pair in PBS only storage buffer at a concentration of 1 mg/mL, ready for conjugation. Created using Proteintech's proprietary in-house recombinant technology. Recombinant production enables unrivalled batch-to-batch consistency, easy scale-up, and future security of supply.

Matched antibody pairs are designed for use in a variety of assays and platforms that require matched antibody pairs.

Antibody use should be optimized for each application and assay.

## Storage

Storage:  
Store at -80°C.  
Storage buffer:  
PBS only

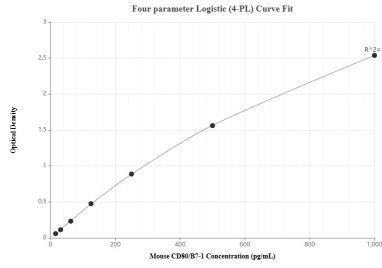
For technical support and original validation data for this product please contact:

T: 1 (888) 4PTGLAB (1-888-478-4522) (toll free in USA), or 1(312) 455-8498 (outside USA)

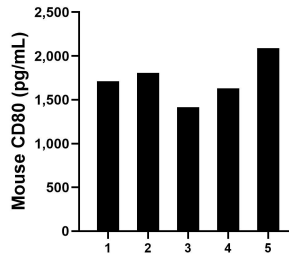
E: [proteintech@ptglab.com](mailto:proteintech@ptglab.com)  
W: [ptglab.com](http://ptglab.com)

This product is exclusively available under Proteintech Group brand and is not available to purchase from any other manufacturer.

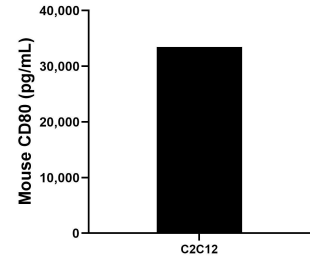
## Selected Validation Data



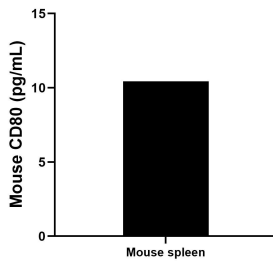
Sandwich ELISA standard curve of MP01051-4, Mouse CD80/B7-1 Recombinant Matched Antibody Pair - PBS only. 84137-6-PBS was coated to a plate as the capture antibody and incubated with serial dilutions of standard Eg0840. 84137-4-PBS was HRP conjugated as the detection antibody. Range: 15.6-1000 pg/mL



Serum of five mice was measured. The mouse CD80/B7-1 concentration of detected samples was determined to be 1,731.45 pg/mL with a range of 1,416.7 - 2,090.4 ng/mL.



The mean CD80/B7-1 concentration was determined to be 33,454.1 pg/mL in C2C12 cell extract based on a 3.2 mg/mL extract load.



Mouse spleen tissue was cultured in RPMI supplemented with 10% fetal bovine serum, 5  $\mu$ M  $\beta$ -mercaptoethanol, 2 mM L-glutamine, 100 U/mL penicillin, and 100  $\mu$ g/mL streptomycin sulfate. An aliquot of the cell culture supernate was removed, assayed for mouse CD80/B7-1, and measured 10.44 pg/mL